

# SL-4500™ “SLIM” TONG & BACKUP

Farr Canada's newest tubular connection tool offers a significantly reduced rig footprint, while continuing to deliver power and uncompromising reliability. The simple design drastically cuts maintenance and overhaul times, and the hydraulic shifter mechanism conveniently allows operators to "shift on the fly", eliminating the need to stop the tong to shift gears.

**The small size of the SL-4500 makes it an ideal tool for snubbing and workover / service rig applications.**

This tong and backup<sup>1</sup> combination is available in high torque and low torque versions. The SL-4500 is available with a variety of options including (but not limited to): a "mono-rail" rigid sling, dual-rail rigid sling, safety door kit and Farr's patented WinCATT data acquisition and torque control system for the makeup of tubular connections.

A wide range of jaw die kits ranging in size from 2-1/16" to 5" are available for this tong. Call our sales department for complete information:

<sup>1</sup> Tong is available as a stand-alone unit, without backup

## SPECIFICATIONS:

### Maximum Power Unit Requirements:

50 GPM / 189 LPM & 2500 psi / 17.2 MPa (Hi-Torque)  
40 GPM / 151 LPM & 2500 psi / 17.2 MPa (Lo-Torque)

**Length:** 38-1/2" / 97.8 cm  
**Width:** 20" / 50.8 cm  
**Height:** 57" / 144.8 cm (mono-sling)  
50" / 127 cm (rigid sling)

**Weight (Approximate):** 950 lbs / 409 kg (Tong & Backup)

**Weight (Approximate):** 600 lbs / 273 kg (Tong Only)

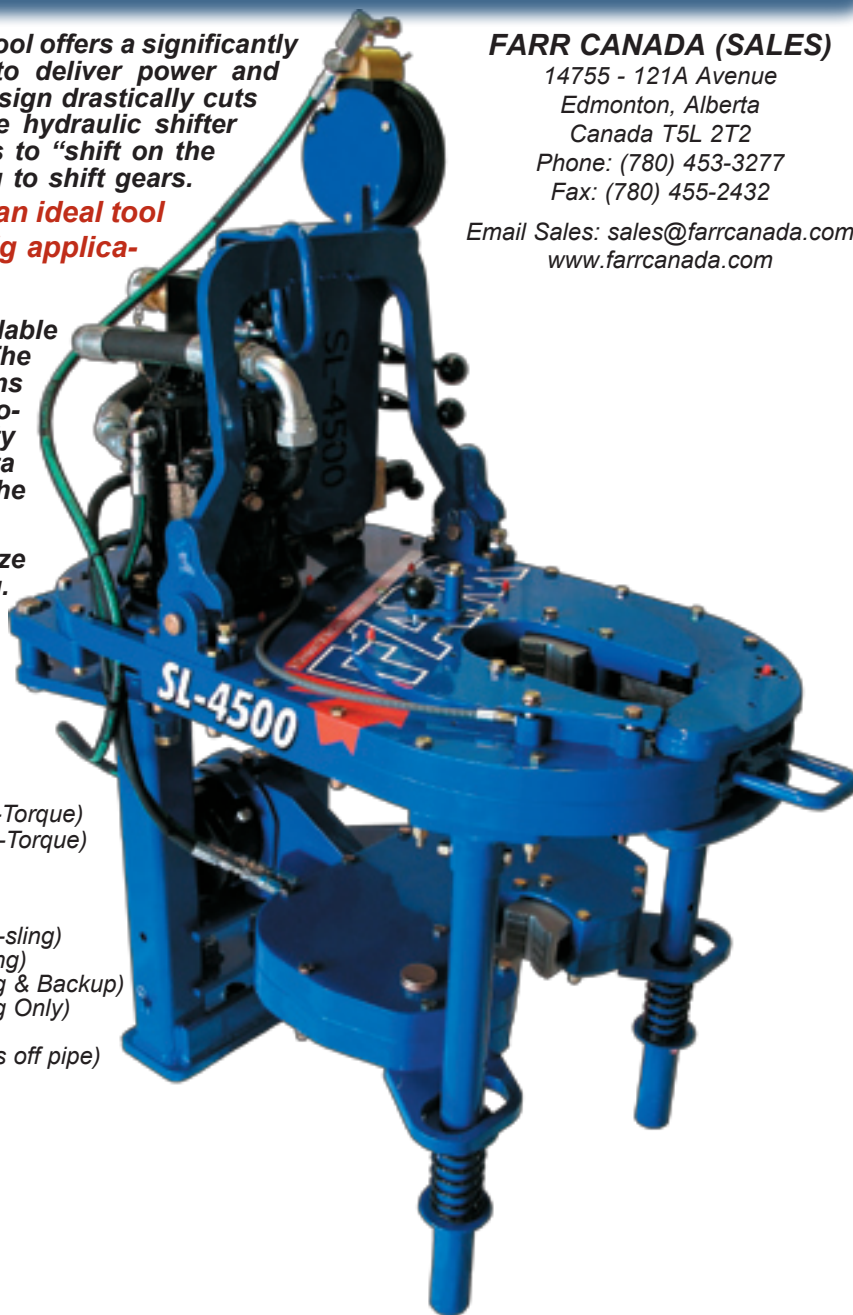
**Pipe Space Req'd:** 4" / 10.2 cm

**Max. Elevator Diameter:** Unlimited (tong comes off pipe)

**Torque Arm Length:** 24" / 61 cm

### Available Standard Jaw Sizes:

2-3/8", 2-7/8", 3", 3-1/2", 4-1/2", 5"



## FARR CANADA (SALES)

14755 - 121A Avenue  
Edmonton, Alberta  
Canada T5L 2T2

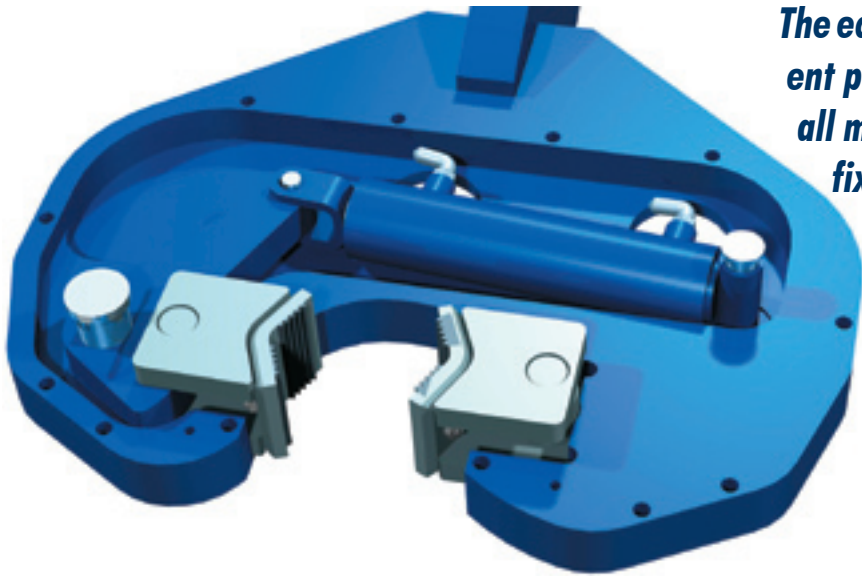
Phone: (780) 453-3277

Fax: (780) 455-2432

Email Sales: sales@farrcanada.com  
www.farrcanada.com

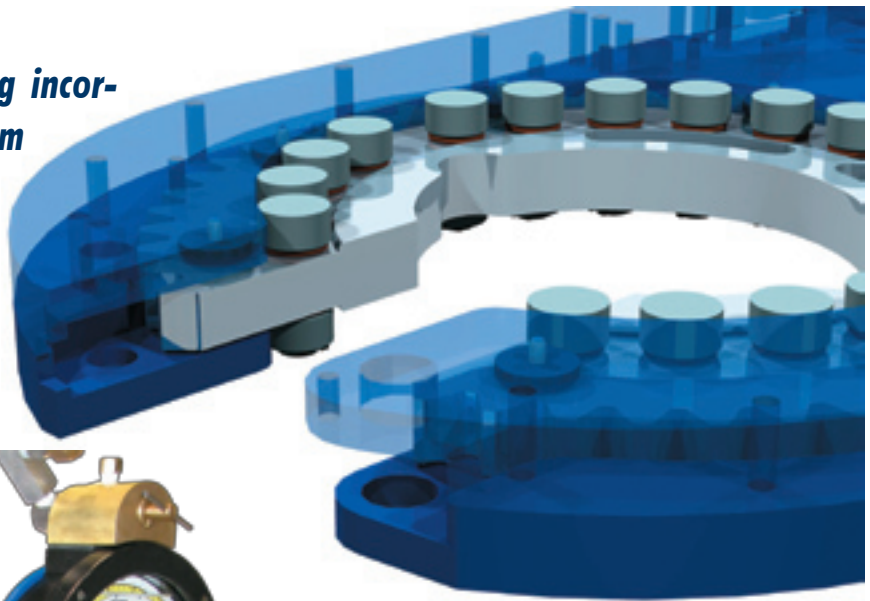
Torque Table (Low Torque)		
Pressure (PSI)	Hi Speed (lbs.-ft.)	Lo Speed (lbs.-ft.)
1000	660	2300
1500	1060	3700
2000	1485	5200
2500	1885	6500
<b>MAXIMUM RATED TORQUE: 6500 LBS.-FT.</b>		
Speed Table (Low Torque)		
Flow (US GPM)	Lo Speed (RPM)	Hi Speed (RPM)
10	8	28
20	16	55
30	24	83
40	32	111

Torque Table (High Torque)		
Pressure (PSI)	Hi Speed (lbs.-ft.)	Lo Speed (lbs.-ft.)
1000	1400	2800
1500	2300	4600
2000	3150	6300
2500	4000	8000
<b>MAXIMUM RATED TORQUE: 8000 LBS.-FT.</b>		
Speed Table (High Torque)		
Flow (US GPM)	Lo Speed (RPM)	Hi Speed (RPM)
10	6	13
20	13	23
40	26	51
50	32	64



*The economical design of the SL-4500's patent pending backup has eliminated almost all moving parts. The backup features one fixed jaw, and one active jaw that is engaged using a single cylinder.*

*The uniquely designed SL-4500 tong incorporates a patent pending roller system that supports both the rotary gear and the cage plates. This feature significantly reduces the overall dimensions of the tong as well as ownership and maintenance costs.*



*The safety door hydraulics have been incorporated into the inlet section of the valve bank, eliminating the need for external valve blocks. Less hydraulic plumbing reduces external clutter making hydraulic problems simpler to troubleshoot.*

*No mechanical shifting - speed control is performed using a two-speed motor. A 3.5:1 motor ratio is available.*

*The simple, elegant design of the SL-4500 has significantly reduced manufacturing and assembly costs, resulting in a more economical product and reduced maintenance costs.*