

DELIVERING
DEPENDABILITY
SINCE 1993.



**SUPERIOR EQUIPMENT
OUTSTANDING VALUE
PRODUCED ON TIME**

**TEXAS INTERNATIONAL OILFIELD TOOLS, LTD
WWW.TEXASINTERNATIONAL.COM
WWW.OILTOOLS.RU**

Table of Contents

About Us 3

TI Mfg.Tools 04

Power Equipment 05

Power Tongs 24

Elevators & Spiders 34

Casing Tools 48

Drilling Tools 56

Rotary Tools 71

Fishing Tools 75

Rentals 80

Manufacturing 81

Index by page 84

Index by ABC 86

**868 Pear Street
Houston, TX 77060**

**P: 281-447-3980
TF: 888-317-9109
F: 281-447-3988**

Texas International 



Oilfield Tools, LTD

www.TexasInternational.com

Texas International Oilfield Tools, LTD continues to expand in 2012!

Since 1993, the directors of Texas International have committed their combined experience of over 100 years in the oil and gas industry to constantly improve and expand for the benefit of their customers.

2012 marks another milestone as Texas International moves into a new over 100,000 sq. ft. facility, bringing logistical manufacturing, repair and re-certification, product load testing, Magnetic Particle Inspection (MPI) and an extensive on-site inventory under one roof.

As a leader in casing supplies, Texas International provides critical oilfield equipment and tools to the oil and gas, geothermal, large water well and petrochemical industries. We stock Varco® and AOT products, and are authorized distributors for ConTech – Connection Technology and McCoy Products, including Farr Power Tongs, Precision Die Technologies and Wincatt™.

Texas International also manufactures hard-to-find casing tools including the SLX Side Door Elevator up to 500 Ton. Along with the Skid Mounted Power Units and the 250 ton Elevator Spiders, we will soon be adding the TI350 ton E/S. We have created an Engineered Services Group to custom design products allowing us the capability to build items to fit your needs.

It is the policy of Texas International Oilfield Tools to meet and/or exceed our customer requirements by on-time delivery of the highest quality of oilfield equipment, in strict compliance with safety and regulatory requirements, while providing maximum value and superior customer service during and after the sale of products, and to continually improve the effectiveness of our quality management system.

We offer competitive pricing on quality equipment directly to you saving you time and resources. We also provide a line of long-term rental equipment at prices you can afford.

Taking manufacturing into our own hands to ensure quality and customer satisfaction, Texas International is proud to Present the following TI Mfg. Products.

100 Ton Bowl - 10-3/4" & 8-5/8" API

250 Ton Elevator/Spiders

Casing Bushings - 20"

CMS-XL - 6-5/8" to 36"

Drill Collar Slip - 3" to 14"

Drill Pipe Elevators - GG, MGG, RG, MG

EZY Torque Hydraulic Cathead - and Parts

Flex Handles - DU, SDXL, UC

Hinged Spider - 13-3/8" 200 Ton, 20" 200 Ton, 36" 500 Ton

Insert Bowls - #1, #2, #3

Kelly Drive Bushings - Hex & Square

Kelly Spinners - Pneumatic & Hydraulic

Master Bushings - MSPC, MPCH, MSS

Pneumatic Tubing Spider - Type C, CHD, E, F

Rotary Slips - SDS, SDML, SDXL, DU REGULAR & DU LONG

Safety Clamps - Type C & T (with or without Air Over Hydraulic), MP-R & MP-S

Single Joint Elevators - 2-3/8" to 30" and SJX Style - 3-1/2" to 13-3/8"

Skid Mounted Power Unit - Air Start or Electric Start Deutz 6 Cyl Diesel

Slip Type Elevators - MYT, YT, YC, MYC, HYC, HYT

SLX Side Door Elevators - 3-1/2" to 30" - 150 Ton, 250 Ton, 350 Ton & 500 Ton

TA-100 & TA-150 Center Latch Elevators

Top and Bottom Guides - for 250 Ton, 350 Ton and 500 Ton Elevator/Spiders

UC3 Casing Slip - 7" to 36"

Weldless Links - 150 Ton - 350 Ton



T1 136E Electrohydraulic Power Unit

Texas International Skid Mounted Power Units

Diesel Powered

- Deutz powered
- Air or Electric start
- Hydraulic Oil Cooler

Manual Available

Electrohydraulic

- 75 HP Motor
- Explosive proof

Manual Available

Zone II DPU44

- Explosive proof
- EPA Approved
- ATEX (94/9 EEC)
- Special Order

Skid Mounted Power Units - Hydraulic



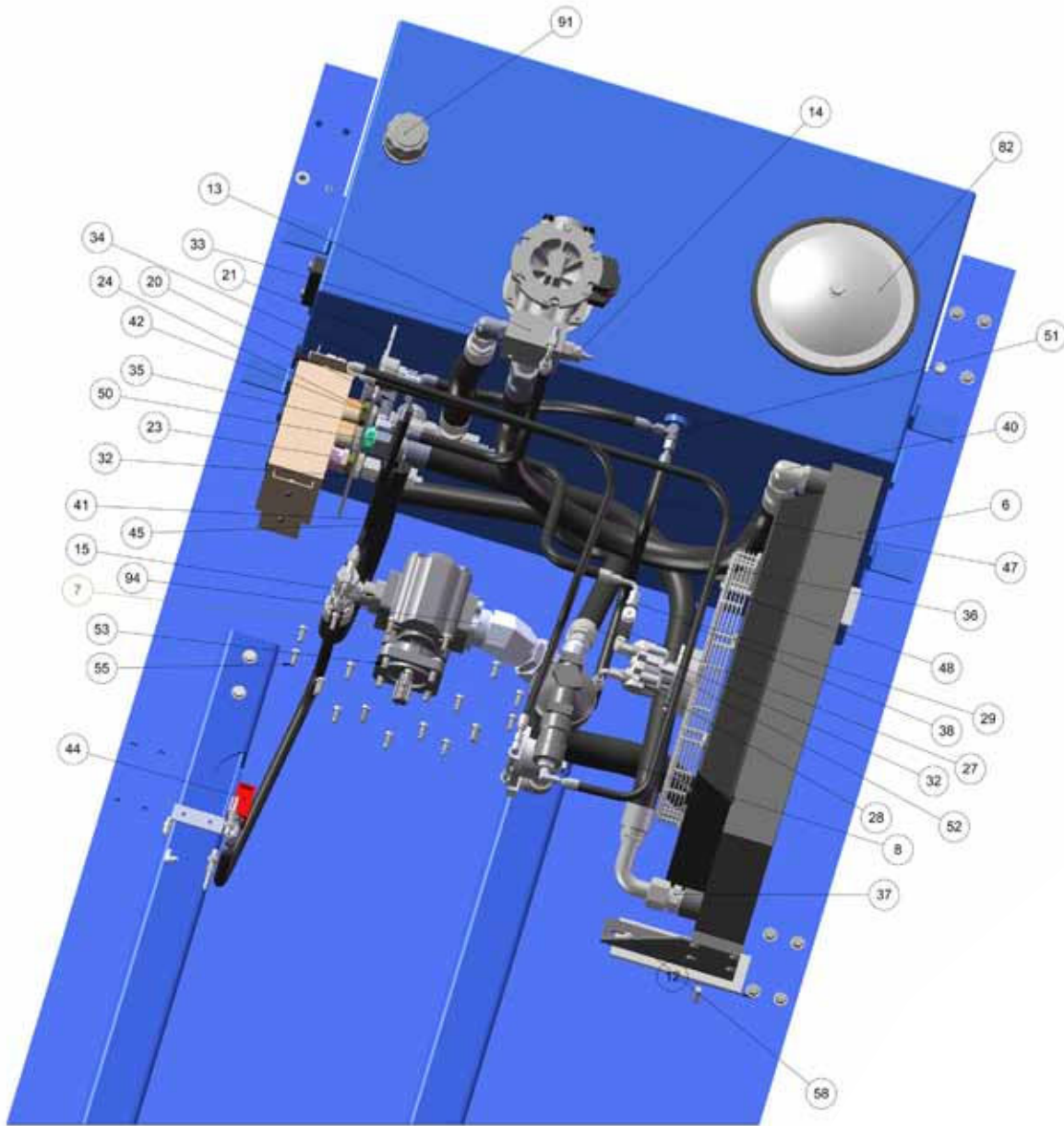
MADE IN USA

Skid Mounted Power Unit 6 Cycle Deutz Engine

- Air Operated or Electric Start
- Leakage Confirmation
- Spark Arrester
- Hydraulic Cooler
- Positive Air Shutdown (Mechanical)
- Belt Break Shutdown
- Complete with 50' of hose.

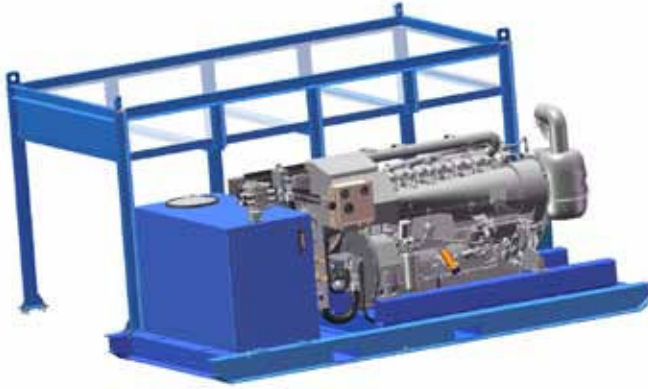
MANUAL AVAILABLE

Skid Mounted Power Units - Hydraulic



	(List of components and their part numbers)	(List of quantities)	(List of descriptions)
	HYDRAULIC POWER UNIT, AIR START SEE DWG NO: D TCCD914L06-AIR A SC-42-11 (REV 01) (REV 01)		

Skid Mounted Power Units - Hydraulic



ITEM NO.	PART NUMBER	DESCRIPTION	Quantity	ITEM NO.	PART NUMBER	DESCRIPTION	Quantity
1	TC0914L06	Equip Model Number: TC0914L06, Six Cylinder, Four Cycle, Air Cooled, Turbocharged, Air Start, 3 or 3 Diesel Engine Rated 174 HP @ 2300 RPM (Includes: Skid Mounts, Oil Bath Air Cleaner, Manifold Muffler, Speed Control Lever, SAE #3 Housing and 10711.5"	1	51	030044	TEE, RUN, 3/8" MALE JIC X 3/8" MALE NPT X 3/8" MALE JIC	1
2	060013	SAE No 3 Housing SAE B Pump Mount	1	52	030003	ELBOW, 90 DEGREE, 3/8" MALE JIC X 3/8" MALE O-RING BOSS	1
3	060003	SAE No 10 Flywheel to Pump Coupling	1	53	040127	300 X 1.5 Hex Head Bolt	23
4	060022	P51 Series Pump	1	54	040106	NUT, HEX, NYLOC, 10-13, ZINC OR ZINC CHROMATE PLATED	17
5	TD914L06-2	Tank Hydraulic Fluid Six Cylinder Diesel Power	1	55	040090	SCREW, CAP, HEX HEAD, 3/8-16 X 1" LONG, GRADE 8	21
6	060015	Thermal Transfer Products Oil Cooler	1	56	040013	SCREW, CAP, HEX HEAD, 10-13 X 5-1/2" LONG, GRADE 8	2
7	030037	CONNECTOR, STRAIGHT, STEEL, 2" MALE NPT X 2" MALE JIC	1	57	040014	WASHER, FLAT, 1/2" (531 ID, 1.25 OD, 100 THK)	6
8	060029	32GM-32F-JX-32F-JX-17" OAL	1	58	040016	SCREW, CAP, HEX HEAD, 3/8-16 X 1-1/4" LONG, GRADE 8	4
9	TD914L06-3	Tank Diesel Six Cylinder Diesel Hydraulic Power	1	59	030032	2" NPT TEST WELL CAP AND ADAPTER - THREADED	1
10	TTCD914L06-4	Basket Tool, Turbocharged Six Cylinder Diesel Power Unit	1	60	030029	NUT, BULKHEAD, 1" TUBE FITTING, 1-5/16-12 THREAD	2
11	TTCD914L06-1	Frame, Six Cylinder Turbocharged Diesel	1	61	030030	NUT, BULKHEAD, 1-1/4" TUBE FITTING, 1-5/16-12 THREAD	1
12	040014	500 Normal Flat Washer	24	62	030033	ELBOW, STREET, 45 DEGREE, MALLEABLE IRON, 2" NPT	1
13	060012	Wika 3000 Psi Pressure Gauge	1	63	030034	ELBOW, STREET, 90 DEGREE, MALLEABLE IRON, 2" NPT	1
14	060018	Wich-LAN	1	64	030035	NIFFLE, PIPE, SCHEDULE 40, 12" LONG, 2" NPT	1
15	060014	1 Inch SAE Flange Fitting	1	65	030036	REDUCER ENLARGER, JIC TUBE, STEEL, 1" FEMALE JIC X 3/8" MALE JIC	1
16	030063	WFB-S, Sensitive Supply Disconnect	1	66	030048	ELBOW, 90 DEGREE, 3/8" MALE JIC X 3/8" FEMALE JIC SWIVEL	1
17	030061	WTFP 10-B, Sensitive Return Disconnect	1	67	030049	CONNECTOR, STRAIGHT, STEEL, 1" MALE NPT X 1" FEMALE JIC SWIVEL	1
18	060012	Wika 3000 Psi Pressure Gauge	1	68	030052	ELBOW, 90 DEGREE, 3/8" MALE JIC X 3/8" MALE O-RING BOSS	2
19	030006	3/8" Elbow, 90 Degree JIC	1	69	030058	ANCHOR FLUID POWER W63-16-16U FLANGE WITH HARDWARE - SAE SERIES 61 FLANGE, 1" NPT WITH O-RING & BOLTS	1
20	060013	2 Way Ball Valve	1	70	030059	ANCHOR FLUID POWER W63-30-30U FLANGE WITH HARDWARE - SAE SERIES 61 FLANGE, 2" NPT WITH O-RING & BOLTS	1
21	TD914L06-2-4	Tank Gauge Mounting Bracket	1	71	030060	DIXON W150C-B CAP - 1-1/4"	1
22	060038	3/8 to 1 inch Reducer Enlarger	2	72	030061	DIXON QUICK W10F-16-B THREADED NIFFLE - 1-1/4"	1
23	030031	Coupling, Tantalum Clam Malleable Iron, 1" pipe	1	73	030150	ELBOW, 90 DEGREE, 1/2" MALE O-RING BOSS X 3/8" MALE NPT	1
24	030045	Bulkhead Fitting 1" male NPT x 1" male JIC	2	74	040002	WASHER, LOCK, SPLIT, 3/8"	4
25	030039	REDUCER ENLARGER, JIC TUBE, STEEL, 1" FEMALE JIC X 1-1/4" MALE JIC	1	75	040012	SCREW, CAP, HEX HEAD, 10-13 X 2-1/2" LONG, GRADE 8	4
26	030043	Tee 1 inch JIC x JIC x NPT 1/2 inch	1	76	040015	WASHER, LOCK, SPLIT, 1/2"	38
27	060016	Needle Valve	1	77	040016	SCREW, CAP, HEX HEAD, 3/8-16 X 1-1/4" LONG, GRADE 8	4
28	030164	JIC X O Ring Boss Straight 3/8" X 3/8"	1	78	030060	TEE, BRANCH, 3/8" MALE JIC X 3/8" MALE JIC X 3/8" FEMALE JIC SWIVEL	1
29	030036	CONNECTOR, STRAIGHT, STEEL, 3/8" MALE NPT X 3/8" MALE JIC	1	79	030022	HOSE, HPL, 50' SUPPLY MHH42516-115-116-50 - 1-1/4" X 30' 1815 PSI WP 1000AT HOSE COUPLED WITH FEMALE WING NUT FITTING EACH END ALTERNATE MANUFACTURER PART NUMBER R1116-160P/HP/50-160P/HP/50-50	1
30	030015	CONNECTOR, STRAIGHT, STEEL, 25" MALE NPT X 3/8" MALE JIC	1	80	030023	HOSE, HPL, 50' RETURN MHH42510-120-120-50 - 1-1/4" X 30' 1815 PSI WP 1000AT HOSE COUPLED WITH FEMALE WING NUT FITTING EACH END ALTERNATE MANUFACTURER PART NUMBER R220-20MR/10WP/10B-20MR/10WP/10B	1
31	030051	Run Tee, 1" Male JIC X 1" Female JIC Swivel X 1" male JIC	2	81	060017	PARKER RP RETURN LINE FILTER PART NUMBER RP221028P/50/50/50/1	1
32	060025	18M9K-18F-JX-18F-JX-14.5" OAL	1	82	060019	SAINT MACHINERY SEC-12 COVER (WITH GASKET)	1
33	030054	Elbow, 90 Degree, 1" Male JIC X 1" Male O-ring Boss	1	83	060020	VALVE, BALL, 2" FEMALE NPT, LOW PRESSURE	1
34	030040	Elbow, 90 Degree, 3/8" Male JIC X 25" Female NPT	1	84	060000	3" DIAMETER X 7' LONG STEEL EXHAUST PIPE	1
35	030024	Elbow, 90 Degree, 3/8" Male JIC X 25" Male NPT	3	85	060001	HOSE CLAMP, WORK DRIVE, NON-SLIP SCREW, 3" - 3-1/2" CAPACITY	2
36	050028	20G1-20F-JX-20F-JX-45" OAL	1	86	060002	3" U-BOLT MUFFLER CLAMP	3
37	030047	CONNECTOR, STRAIGHT, STEEL, 1-1/4" MALE JIC X 1-1/4" MALE O-RING BOSS	1	87	060004	M02006 SPARK ARRESTOR, 3" EXHAUST INLET/OUTLET	1
38	050027	20G1-20F-JX-20F-JX-54" OAL	1	88	060034	3" EXHAUST PIPE 90 DEGREE MANORREL BEND, MILD STEEL, 14 OR 16 GAUGE	1
39	050018	602-6F-JX-6F-JX-21" OAL	1	89	030030	AK 3888 BND OXIDE PREIMER	1.5 Gal
40	030055	Elbow, 90 Degree, 1.25" Male JIC X 1.25" Male O-Ring Boss	1	90	030031	AK 6171 SAFETY BLUE	1.5 Gal
41	050020	602-6F-JX-6F-JX-38" OAL	1	91	T17967-38	FILTER CAP/FILTER BREATHER	1
42	050045	602-6F-JX-6F-JX-41" OAL - Gaskets	1	92	T17967-26	SIGHT LEVEL GAUGE / TEMP	1
43	030042	45 Degree Elbow 1" JIC X NPT	1	93	030049	CONNECTOR, STRAIGHT, STEEL, 1"	1
44	060005	Hydro Throttle vlv-9029	1				
45	050028	18M9K-18F-JX-18F-JX-39" OAL	1				
46	050019	602-6F-JX-6F-JX-34" OAL	1				
47	060021	602-6F-JX-6F-JX-36" OAL	1				
48	050024	1602-18F-JX-18F-JX-47" OAL	1				
49	030056	TEE, RUN, 1" MALE JIC X 1" MALE O-RING BOSS X 1" MALE JIC	1				
50	030046	BULKHEAD, STRAIGHT, 1.25" MALE NPT X 1.25" MALE JIC	1				



PROVIDING SPECIFIC INFORMATION TO THE USER IS THE RESPONSIBILITY OF THE USER. THE USER SHALL BE RESPONSIBLE FOR OBTAINING ALL NECESSARY PERMITS AND APPROVALS FROM THE APPROPRIATE AGENCIES. THE USER SHALL BE RESPONSIBLE FOR OBTAINING ALL NECESSARY PERMITS AND APPROVALS FROM THE APPROPRIATE AGENCIES.

Properties and Characteristics of Texas International Oil Field Tools, Inc. are not guaranteed without written permission from TIT.

HYDRAULIC POWER UNIT, AIR START

SIZE (WxDxH) 36" X 36" X 36"
D TTCD914L06-AIR
 SCALE 1:8 WOODS SHEET 3 OF 3



Skid Mounted Power Units - Electrohydraulic



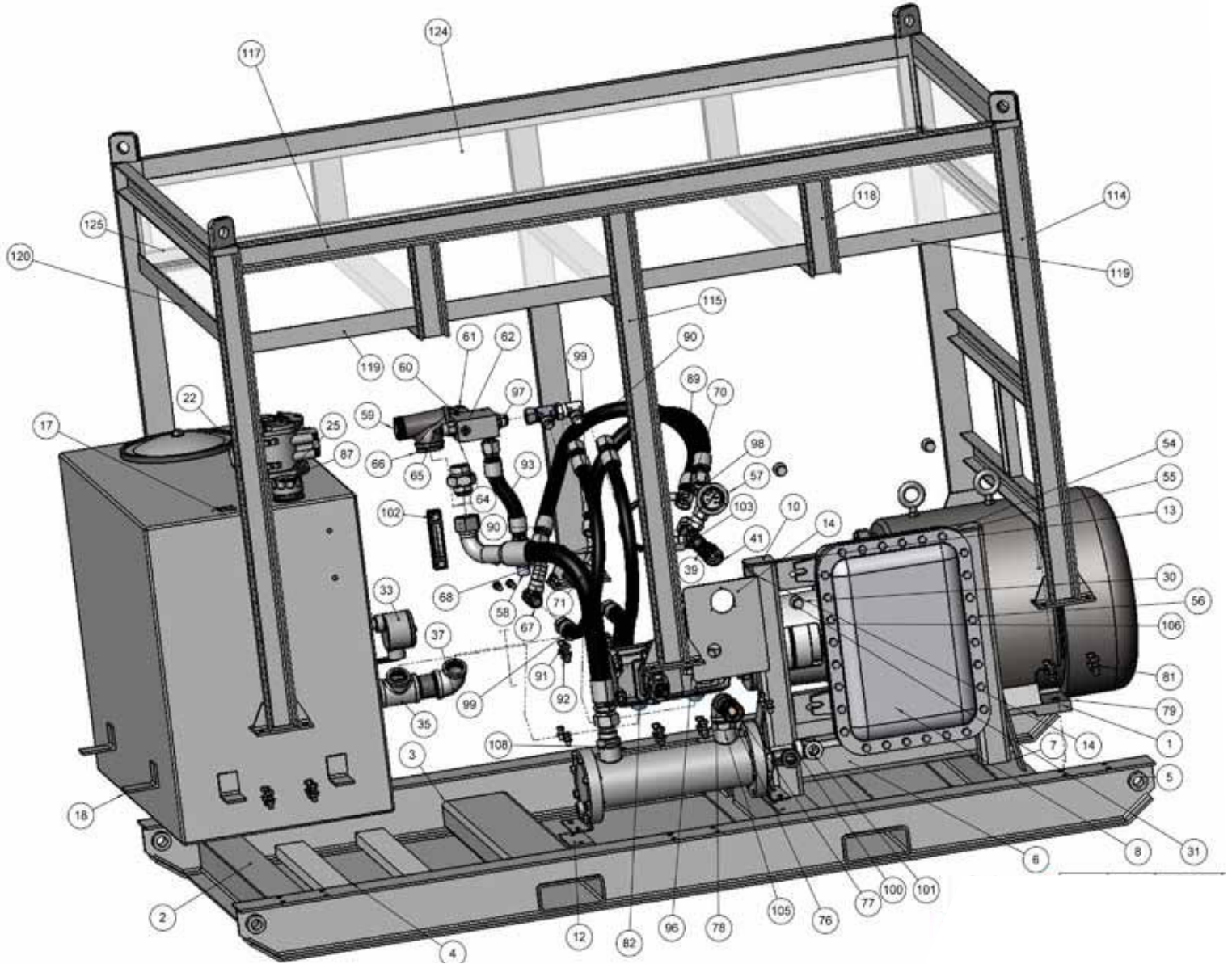
MADE IN USA

Skid Mounted Power Unit 75 HP Electrohydraulic

- 60 hz electric motor (50 hz available)
- Two stage gear type hydraulic pump
- Capable of producing 79 GPM at 1000 PSI, 37GPM at 2500 PSI
- Includes Hydraulic Oil Cooler
- Hydraulic reservoir
- Relief Valve
- Remote start / stop station
- 50 ft. hose system or other configurations

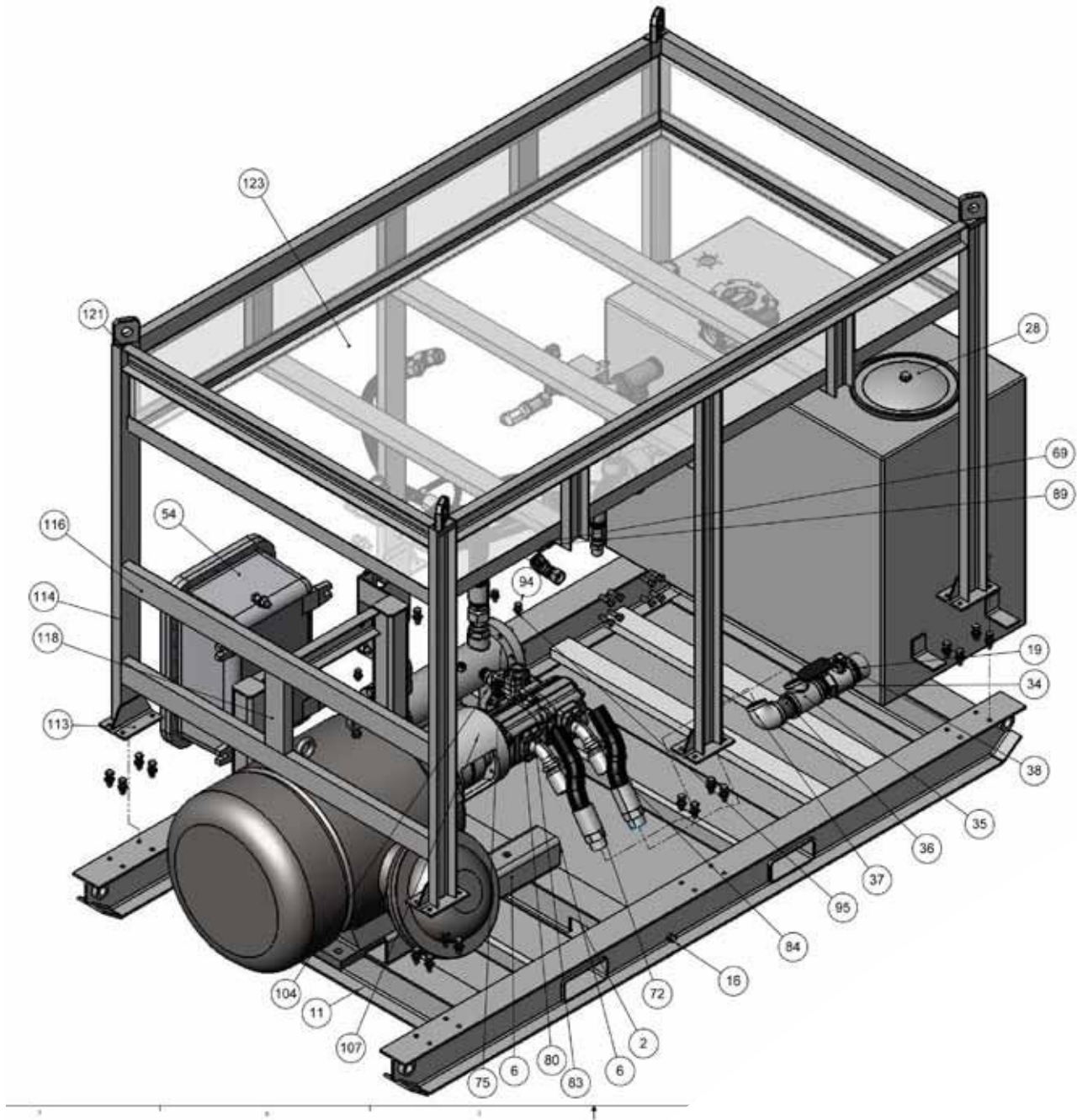
MANUAL AVAILABLE

Skid Mounted Power Units - Electrohydraulic



	TITLE: ELECTROHYDRAULIC POWER UNIT D T1138E-50 A SCALE: AS SHOWN SHEET: 1 OF 3	
	DATE: 01/11/11 DRAWN BY: J. H. HARRIS CHECKED BY: J. H. HARRIS APPROVED BY: J. H. HARRIS	PART NO.: QTY: UNIT: DIMENSIONS:

Skid Mounted Power Units - Electrohydraulic



	TITLE: ELECTROHYDRAULIC POWER UNIT PART NO: D T1136E-50 REV: A SCALE: 1:1 SHEET 1 OF 1	
	DATE: 11/11/11 DRAWN BY: J. GARCIA CHECKED BY: J. GARCIA APPROVED BY: J. GARCIA	MATERIALS: 304 SS FINISH: POLISHED WEIGHT: 150 LBS DIMENSIONS: 48" x 48" x 48"

Skid Mounted Power Units - Electrohydraulic

ITEM NO.	PART NUMBER	DESCRIPTION	QTY.	ITEM NO.	PART NUMBER	DESCRIPTION	QTY.	ITEM NO.	PART NUMBER	DESCRIPTION	QTY.
1	T1136E-1-1	Long Rail,Frame	2	64	060021	Valve Body, Aluminum	1	98	030076	1" JIC TO PIPE ELBOW 90 DEGREES	1
2	T1136E-1-2	Crossmember, Frame	3	65	060018	Sun Cartridge Valve	1	99	030097	1 Inch JIC Swivel 90 Elbow	1
3	T1136E-1-4	Forklift Tube	2	66	030075	Reducer Bushing,2" Male-1.5" Female	1	100	030080	NIPPLE	1
4	T1136E-1-8	Hydraulic Tank Support,Frame	2	67	030051	1INCH JIC SWIVEL TEE	5	101	030081	1 Inch NPT Elbow 1750psi	1
5	T1136E-1-9	Pull Eye	4	68	030026	.25 INCH JIC 45 SWIVEL ELBOW	4	102	T17567-39	Stauff Level Gage	1
6	T1136E-1-3	Motor Support,Frame	2	71	050039	EX20/MP/FJX90S/17.4IN-1.25 INCH DIA HOSE	1	103	030099	STEEL JIC REDUCER EXPANDER	1
7	T1136E-1-13	Panel Vertical Leg	2	72	050031	EX24/FL45S/MP/18.91IN-1.5 DIA HOSE	1	104	060014	1 Inch SAE Flange Fitting	3
8	T1136E-1-14	Disconnect Pnl Bracket	2	74	050032	EX24/FL45S/MP/18.53IN-1.5 DIA HOSE	1	105	030089	1.5 NPT to No 24 SAE Boss	1
9	T1136E-1-7	Front Gusset	2	75	060026	Fluid Cooler	1	106	080007	Vescor 260799 Pump Mount	1
10	T1136E-1-6	3 Inch Square Tubing Cap	2	76	030061	Snaptite Return Disconnect W10F10-B	1	107	080009-080010	Vescor RC7 Coupling	1
11	T1136E-1-5	Belly Pan,Electro-Hydraulic	1	77	030070	1.25 X 1.25 Hex Nipple	1	110	050043	EX24/FJX90-089/FJX/28.2IN-HOSE	1
12	T1136E-1-10	Cross-Brace,Oil Cooler Mount	1	78	030077	1.5 To 1.25 Reducing Elbow	1	111	030101	O-Ring Boss To JIC Straight Adapter	1
13	T1136E-1-14	Disconnect Panel Bracket	2	79	1136E-50	Marathon 75 hp 50 hz	1	113	T1136E-2-4	Foot,Basket,Tool	6
14	T1136E-1-12	Disconnect Panel	1	80	060023	Real 51 Pump	1	114	T1136E-2-3	Leg,Basket,Tool	4
15	030022	.375 NPT Half Coupling	1	81	040014	.500 Normal Flat Washer	28	115	T1136E-2-6	Short Leg,Basket,Tool	2
16	030000	.375 NPT Hex Head Plug	1	82	060024	Dennison Unloader Valve	1	116	T1136E-2-7	Cross Beam,Basket,Tool	7
17	T1136E-3	Tank,Hydraulic Fluid	1	83	030082	1.5 SAE 61 Split Flange Half	4	117	T1136E-2-5	Long Rail, Basket,Tool	2
18	TD914L06-2-5	Tank Mounting Bracket	6	85	050035	EX16/FJX/30.53IN-1 INCH DIAMETER HOSE	1	118	T1136E-2-8	Hanger,Basket,Tool	5
19	030027	2 Inch NPT Female Coupling	1	99	050036	EX16/FJX/29.88IN-1 INCH DIAMETER HOSE	1	119	T1136E-2-1	Long angle,Basket,Tool	2
21	030165	.75 NPT 6ksi Half Coupling	1	87	T17567-38	Stauff Breather_FILLER CAP	1	120	T1136E-2-2	Short Angle,Basket,Tool	2
22	060014	Parker Filter Body	1	88	050038	EX04/FJX/13.88IN-New Gage Hose	1	121	T1136E-2-9	Cap,Leg,Basket,Tool	4
23	060048	Parker RF2200MP Filter Lid	1	89	050037	EX16/FJX/32IN-Low Volume Pressure Hose	1	122	T1136E-2-10	Lifting Lug,Basket,Tool	4
25	060017	Parker RF2200MP Filter Tube	1	90	050034	EX16/FJX/38.94IN-High Volume Pressure Hose	1	123	T1136E-2-11	Floor,Basket,Tool	1
29	060019	Hydraulic Cap Gasket	1	91	040011	.500 X 1.5 Hex Head Bolt	32	124	T1136E-2-12	Long Screen,Basket,Tool	2
30	040035	.625 Normal Flat Washer	9	92	040019	.500 Hex Nut	24	125	T1136E-2-13	Short Screen,Basket,Tool	2
31	040034	.625 X 2 Hex Head Cap Screw	9	93	050033	EX16/FJX/11.75IN-1 DIA HOSE	1				
34	030091	2" Pipe Nipple, 2.5" Long	1	94	040003	HBOLT 0.4375-14x1x1-C	4				
35	030093	Reducing Tee	1	96	040005	Preferred Narrow FW 0.4375	9				
36	030092	2" Pipe Nipple, 3.5" Long	1	97	030090	1" JIC TO 1" Male O Ring Boss	1				
37	030094	Elbow,Reducing	1								
38	060020	2 Inch Ball Valve	1								
39	030045	1 Inch NPT Male X 1 Inch Bulkhead AN Male	1								
41	030063	Snaptite Supply Disconnect W&F8-B	1								
57	060012	314LB-254P_Wika 3000 Psi Pressure Gage	1								
58	030084	JIC To Pipe Straight Coupling	4								
59	030071	Tee,Female X Female X Male,2"	1								
60	030072	2 Inch to 1 Inch Hex Bushing	1								
61	030073	1" Female-Male-Female Tee	1								
62	030074	1 Inch Street Elbow	2								

Texas International
 11000 West Loop South, Suite 1000, Houston, TX 77042
 Phone: 281-447-3980 Fax: 281-447-3981
 Website: www.texasinternational.com

ELECTROHYDRAULIC POWER UNIT
 TITLE: D T1136E-50 REV: A
 SCALE: 1:1 SHEET 3 OF 3



Skid Mounted Power Units - Zone II DPU44

Stability & Conformance
ATEX (94/9/EEC)
Zone II, Class 2, Division 2



CE Marked & Registered for International Use
Special Order

Power Unit Specifications

Engine:	Water Cooled JCB 4 Cylinders
Engine BHP:	80, 99 or 140 HP @ 2,200 RPM
Hydraulic Pump:	2 Stage Gear Pump
Max Flow Rate:	40 or 60 GPM
Max Pressure:	3,000 psi
Hydraulic Filtration:	5 Micron Cartridge Style
Hydraulic System:	Open or Closed
Starter Type:	Air Starter
Engine Throttle System:	On Demand or Manual
Shutdown System:	Automatic and Manual Remote
Instrumentation:	Engine Temperature, Oil Pressure
Hydraulic Reservoir:	140 Gallons
Diesel Fuel Capacity:	50 Gallons
Overall Length:	96"
Overall Width:	48"
Overall Height:	72"
Overall Weight with hydraulic oil:	6,500 lbs.

HYDRAULIC CATHEAD EZY PRECISION TORQUE



Hydraulic Cathead EZY Torque TI7567

- Model D, Type 1
- Precision Unit 50/60 hz
- 460 V

MADE IN USA

MANUAL AVAILABLE

Power: 10 hp / 1760 rpm @ 60 hz, 12.8 A @ 460 v or 25.5 A @ 230 V, three phase
7.5 hp / 1445 rpm @ 50 hz, 15.7 A @ 380 V or 31.1 A @ 220 V, three phase

Pump: Two stage with unloader

Output: 18.89 gpm to 700 psi, 4.73 gpm to 2500 psi @ 60hz, 15.51 gpm to 700 psi,
4.74 gpm to 2500 psi @ 50 hz

Reservoir Capacity: 30 gallons

Maximum Operating Pressure: 2500 psi

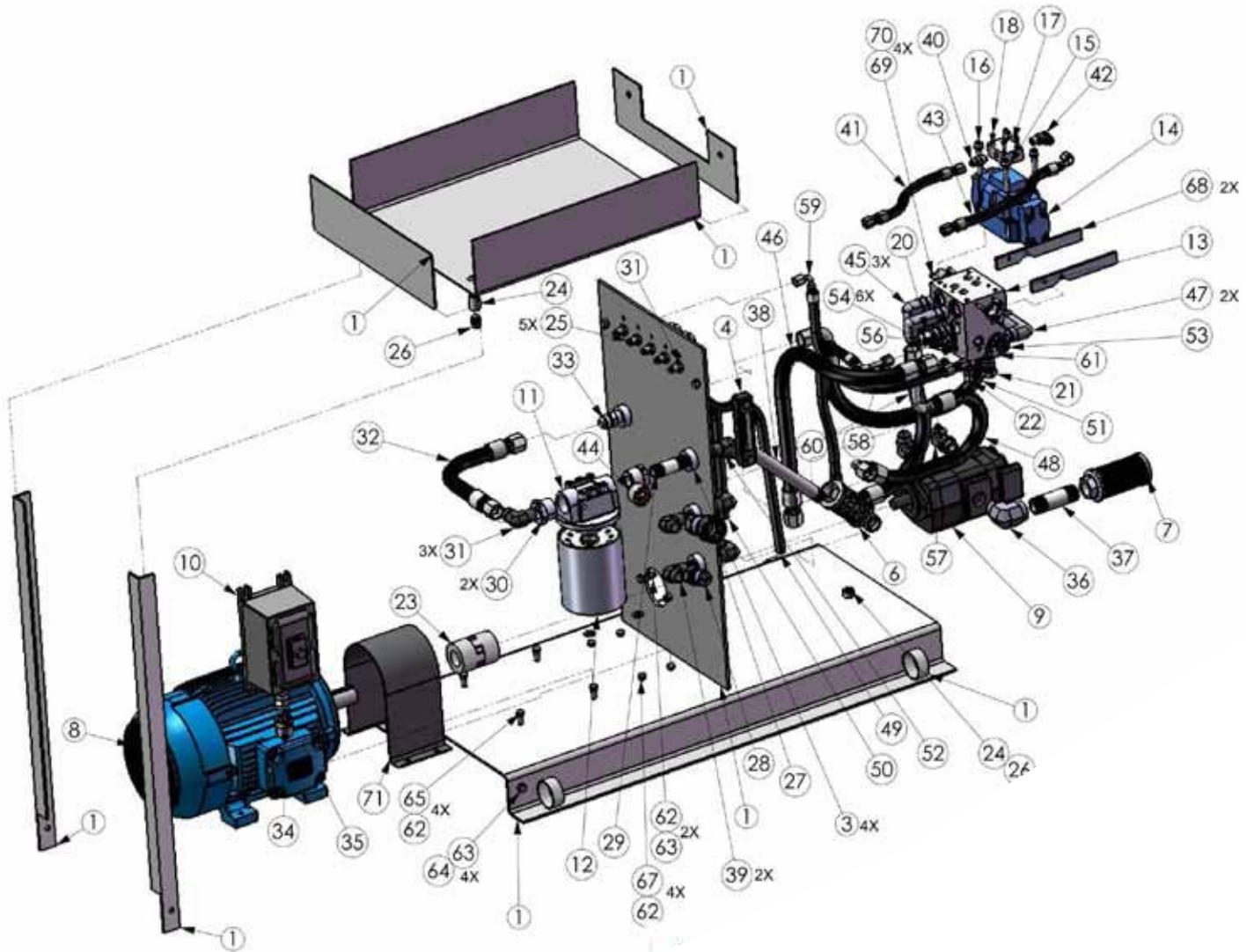
Internal Set Pressures: Main relief, 2750 psi, unloader 700 psi

Weight: 800 pounds dry

Recommended oils: Mobile DTE 24, Castrol Hyspin VG32, Royal Purple
Syndraulic32, Shell Tellus32, PetroCanada Environ AW32. In warmer climates, ISO
viscosity grade 46 is a good choice as well.

HYDRAULIC CATHEAD EZY PRECISION TORQUE

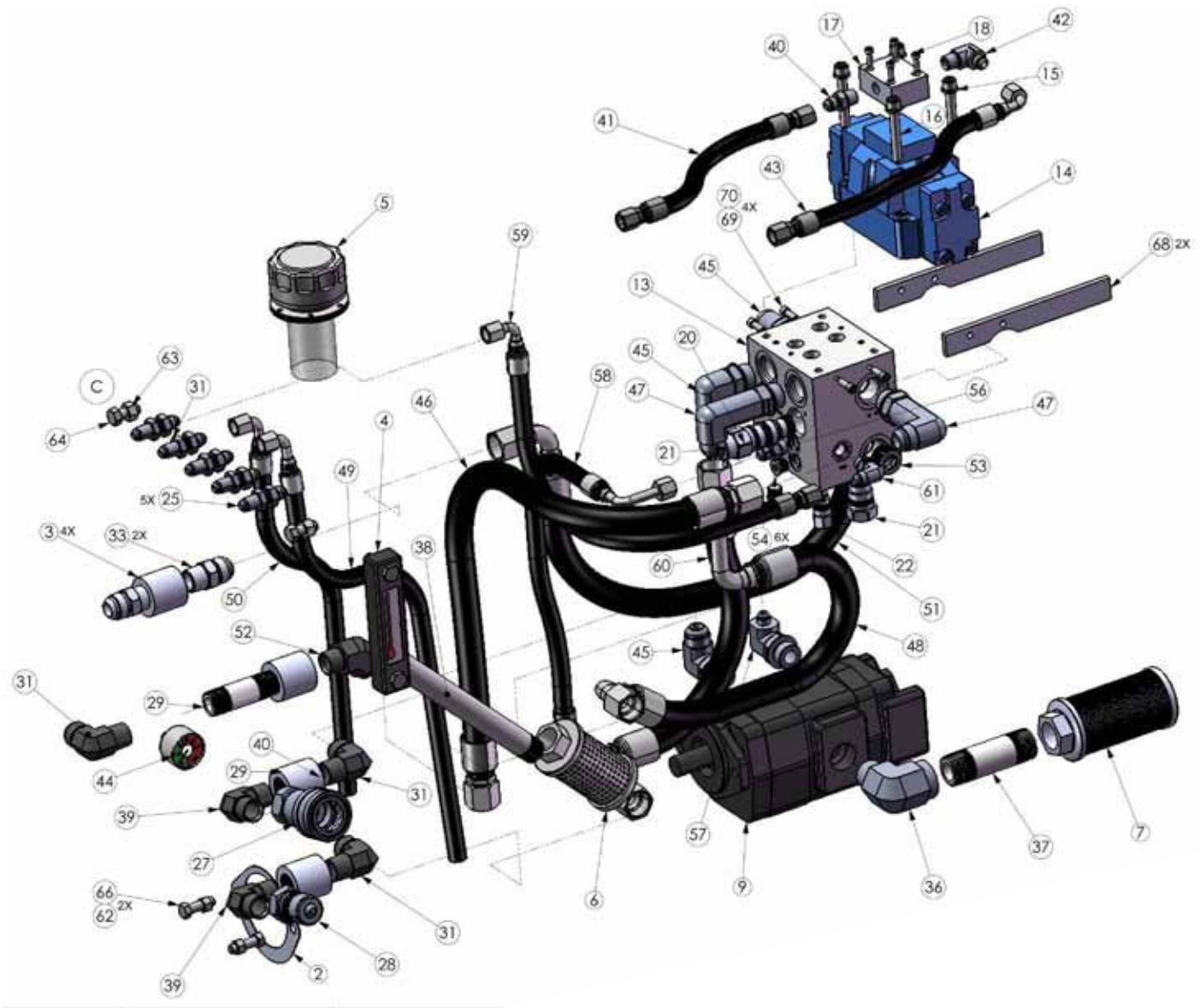
REVISIONS				
DATE	BY	DESCRIPTION	CHKD	APPROVED
B		ADDED ITEM 71 TO BOM ON PAGE 3	05/19/11	JT
C		ITEMS 63 AND 64 WERE IMPROPERLY LABELED	07/29/11	JT



SEE SHEET 3 FOR BOM LISTING

	Teac International Official Tool, Inc.		Revision and Modification to Teac International Official Tool, Inc. Part to be identified without written permission from Teac	
	EZ TORQUE POWER UNIT ASSEMBLY		D T17567-POWER C SCALE: 1:1 (NATURAL) SHEET 1 OF 4	

HYDRAULIC CATHEAD EZY PRECISION TORQUE



	Part Name: EZ TORQUE POWER UNIT ASSEMBLY Part No: T17567-POWER C Rev: 1.0 Date: 11/18/2010	
	Part No: T17567-POWER C Rev: 1.0 Date: 11/18/2010	Part No: T17567-POWER C Rev: 1.0 Date: 11/18/2010

HYDRAULIC CATHEAD EZY PRECISION TORQUE

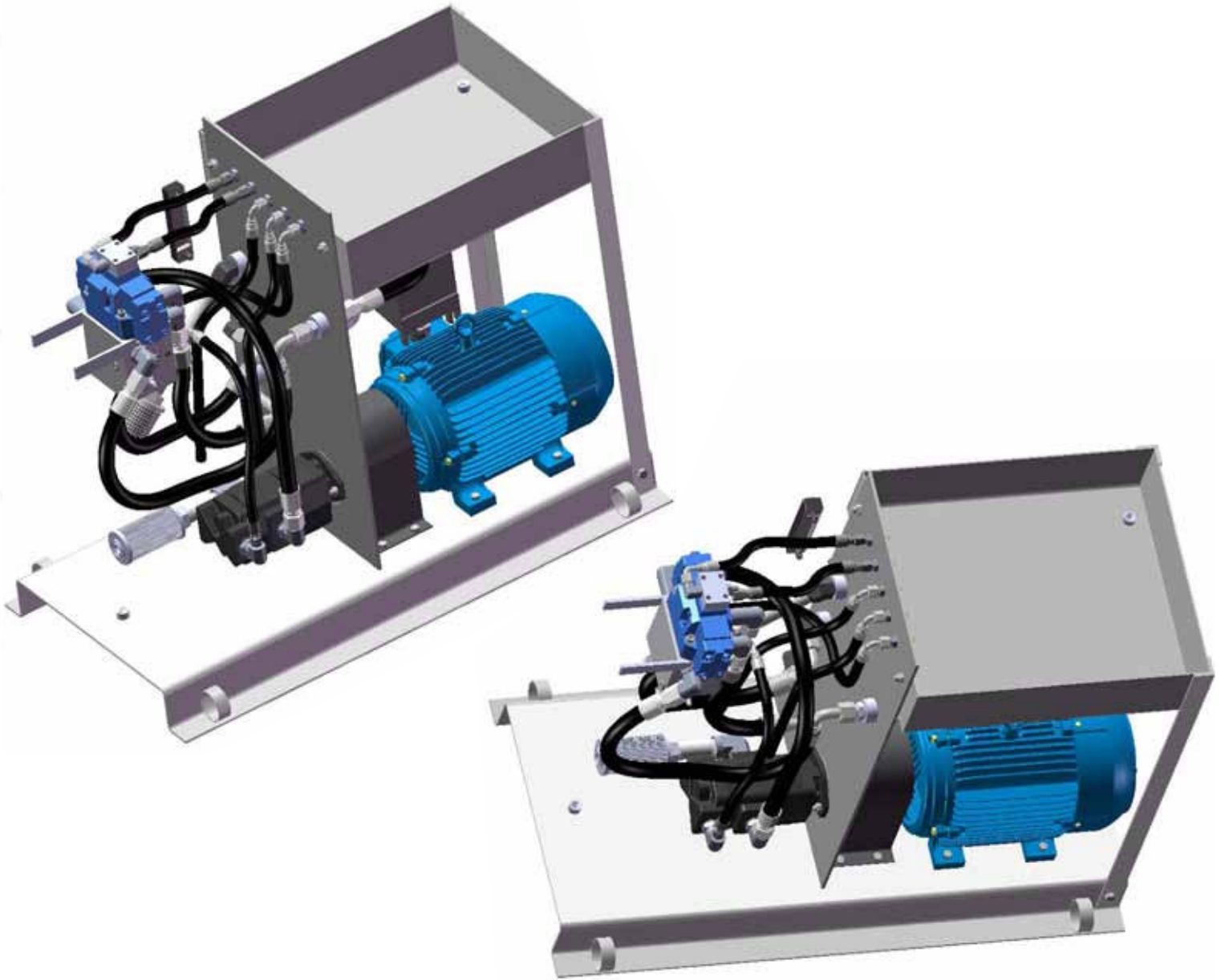
ITEM NO	PART NUMBER	QTY	DESCRIPTION	SHEET	ITEM NO	PART NUMBER	QTY	DESCRIPTION	SHEET
1	T17567-01	1	EZ TORQUE POWER SUPPLY CHASSIS & TANK	1	51	050014	1	12M2T X 31-15/16" OAL WITH 12G-12FJX X 12G-12FJX90S	1.2
2	T17567-29	1	PUMP GASKET, SAE "A" 2 BOLT FLANGE	2	52	030008	1	ELBOW, STREET, 45 DEGREES, 3/4" NPT, STEEL	1.2
3	030021	4	COUPLING PIPE, STEEL, 1-5/8" OD, 3/4" FEMALE NPT - 3000 PSI MINIMUM	2	53	030004	1	PLUG, O-RING BOSS, 3/4" TUBE SIZE, 12 PORT	1.2
4	T17567-39	1	SIGHT LEVEL GAUGE / TEMP	2	54	030003	1	PLUG, O-RING BOSS, 3/8" TUBE SIZE, 06 PORT	1.2
5	060000	1	FILLER CAP/FILLER BREATHER	1	55	030002	1	PLUG, O-RING BOSS, 1/8" TUBE SIZE, 02 PORT	NOT SHOWN
6	T17567-10	1	DIFFUSER, 3/4" NPT, STEEL END CAPS	2	56	030019	1	CONNECTOR, STRAIGHT, STEEL, 3/8" MALE JIC X 3/8" MALE O-RING BOSS	1.2
7	060011	1	STRAINER, SUCTION, METAL END CAP, 1" FEMALE NPT CONNECTION	1.2	57	030020	1	ELBOW, 90 DEGREE, 3/8" MALE JIC X 3/4" MALE O-RING BOSS	1.2
8	T17567-05	1	MOTOR, WEG, 215 T FRAME, 10 HP	1	58	050012	1	6M2T X 20-9/16" OAL WITH 6G-6FJX X 6G-6FJX90L	1.2
9	T17567-46	1	SPECIAL TANDEM PUMP, 3.8 GPM AND 14.6 GPM	1.2	59	050011	1	6M2T X 22-5/16" OAL WITH 6G-6FJX X 6G-6FJX90M	1
10	T17567-09	1	STARTER, POWER UNIT MOTOR	1	60	050016	1	12M2T X 17-7/16" OAL WITH 12G-12FJX X 12G-12FJX90L	1.2
11	T37042-01	1	FILTER BASE	1	61	030008	1	ELBOW, 90 DEGREE, 3/8" MALE JIC X 3/8" MALE O-RING BOSS	1.2
12	T37042-02	1	FILTER ELEMENT	1	62	040001	10	NUT, NORMAL HEX, 3/8-16, GRADE 5	1.2
13	060001	1	MANIFOLD	1.2	63	040004	4	NUT, NORMAL HEX, 7/16-14, GRADE 5	1
14	T17567-18	1	MAIN CONTROL VALVE	1.2	64	040003	4	SCREW CAP, HEX HEAD, 7/16-14 X 1" LONG, GRADE 5	1
15	040002	14	WASHER, LOCK, SPLIT, 3/8"	1.2	65	040000	4	SCREW CAP, HEX HEAD, 3/8-16 X 1-1/2" LONG, GRADE 5	1
16	040006	4	SCREW, CAP, SOCKET HEAD, 3/8-16	1.2	66	040016	2	SCREW, CAP, HEX HEAD, 3/8-16 X 1-1/4" LONG, GRADE 5	1.2
17	060005	1	PILOT CONNECTION BLOCK	1.2	67	040050	4	SCREW, CAP, HEX HEAD, 3/8-16 X 1" LONG, GRADE 5	1
18	040009	4	SCREW, CAP, SOCKET HEAD, 10-24	1.2	68	T17567-01-10	2	MAIN VALVE BLOCK BRACKET	1.2
19	060041	1	RELIEF VALVE	NOT SHOWN	69	040006	4	SCREW, CAP, SOCKET HEAD, 1/4-20 X 3/4" LONG, GRADE 5	1.2
20	060002	1	COUNTERBALANCE VALVE	1.2	70	040007	4	WASHER, LOCK, SPLIT, 1/4"	1.2
21	060003	1	CHECK VALVE	1.2	71	050018	1	MOTOR SHAFT AND COUPLING GUARD	1
22	060004	1	CHECK VALVE	1.2					
23	T17567-40	1	COUPLING ASSEMBLY (MOTOR TO PUMP)	1					
24	030022	2	COUPLING PIPE, STEEL, 3/8" NPT	1					
25	030013	5	UNION, BULKHEAD, 3/8" MALE JIC	1.2					
26	030000	2	PLUG, PIPE, STEEL, 3/8 NPT	1					
27	T12460-37	1	3/4" QUICK COUPLING (FEMALE)	1.2					
28	T13460-40	1	3/4" QUICK COUPLING (MALE)	1.2					
29	030009	1	NIPPLE, PIPE, 3/4" NPT	1.2					
30	030010	2	BUSHING, PIPE, HEX REDUCER	1					
31	030011	3	ELBOW, 90 DEGREE, 3/4" MALE JIC TO 3/4" MALE NPT	1.2					
32	050017	1	HOSE, 12M2T X 16" OAL WITH 12G-12FJX E/E	1					
33	030014	2	CONNECTOR, STRAIGHT, STEEL, 3/4" MALE NPT X 3/4" MALE JIC	1.2					
34	030001	1	BUSHING, PIPE, HEX REDUCER	1					
35	T12460-36	1	3/4" HEX PIPE NIPPLE	1					
36	030016	1	ELBOW, STREET, 90 DEGREES	1.2					
37	030017	1	NIPPLE, PIPE, SCHEDULE 40, 4" LONG, 1" NPT	1.2					
38	030067	1	NIPPLE, PIPE, SCHEDULE 40, 10" LONG, 3/4" NPT	1.2					
39	030012	2	ELBOW, 90 DEGREE, 3/4" MALE NPT, STEEL - MUST BE RATED AT LEAST 2500 PSI WORKING	1.2					
40	030015	1	CONNECTOR, 1/4" MALE NPT X 3/8" MALE JIC	1.2					
41	050008	1	6M2T X 11-3/16" OAL WITH 6G-6FJX E/E	1.2					
42	030024	1	ELBOW, 90 DEGREE, 3/8" MALE JIC X 1/4" MALE NPT	1.2					
43	050007	1	6M2T X 14-3/16" OAL WITH 6G-6FJX X 6G-6FJX90S	1.2					
44	060006	1	GAGE, 25 PSI (0 TO 60), PARKER FILTER	1.2					
45	030018	3	ELBOW, 90 DEGREE, 3/4" MALE JIC X 3/4" MALE O-RING BOSS	1.2					
46	050013	1	12M2T X 31-15/16" OAL WITH 12G-12FJX E/E	1.2					
47	030005	2	ELBOW, 90 DEGREE EXTRA LONG, 3/4" MALE JIC X 3/4" MALE O-RING BOSS	1.2					
48	050015	1	12M3K X 23-7/16" OAL WITH 12G-12FJX90L X 12G-12FJX90S	1.2					
49	050009	1	6M2T X 23-5/8" OAL WITH 6G-6FJX90S ONE END	1.2					
50	050010	1	6M2T X 19-1/2" OAL WITH 6G-6FJX90S ONE END	1.2					

TI Texas International
 3000 Spring Branch Rd
 Houston, TX 77068
 (281) 447-3980
 www.ti.com

EZ TORQUE POWER UNIT ASSEMBLY
 REV: D
 T17567-POWER
 SCALE: 1:1
 SHEET: 1 OF 1



HYDRAULIC CATHEAD EZY PRECISION TORQUE



	<table border="1"><tr><td>REV</td><td>DATE</td><td>BY</td><td>CHK</td></tr><tr><td> </td><td> </td><td> </td><td> </td></tr><tr><td> </td><td> </td><td> </td><td> </td></tr><tr><td> </td><td> </td><td> </td><td> </td></tr></table>	REV	DATE	BY	CHK													<table border="1"><tr><td> </td><td> </td><td> </td><td> </td><td> </td><td> </td></tr><tr><td> </td><td> </td><td> </td><td> </td><td> </td><td> </td></tr><tr><td> </td><td> </td><td> </td><td> </td><td> </td><td> </td></tr><tr><td> </td><td> </td><td> </td><td> </td><td> </td><td> </td></tr><tr><td> </td><td> </td><td> </td><td> </td><td> </td><td> </td></tr></table>																														
REV	DATE	BY	CHK																																													
EZ TORQUE POWER UNIT ASSEMBLY			REV D 111567-POWER C																																													

HYDRAULIC CATHEAD - CYLINDER ASSEMBLY

Bore: 6.00 inches

Stroke: 24.5 inches

Full stroke wireline travel: 45 inches

Maximum pull force: 35343 pounds

Maximum operating pressure: 2500 psi

Torque range: 40,000 to 170,000 ft-lbs
(when applying less than 40,000 ft-lbs. verify setting with a load cell.)

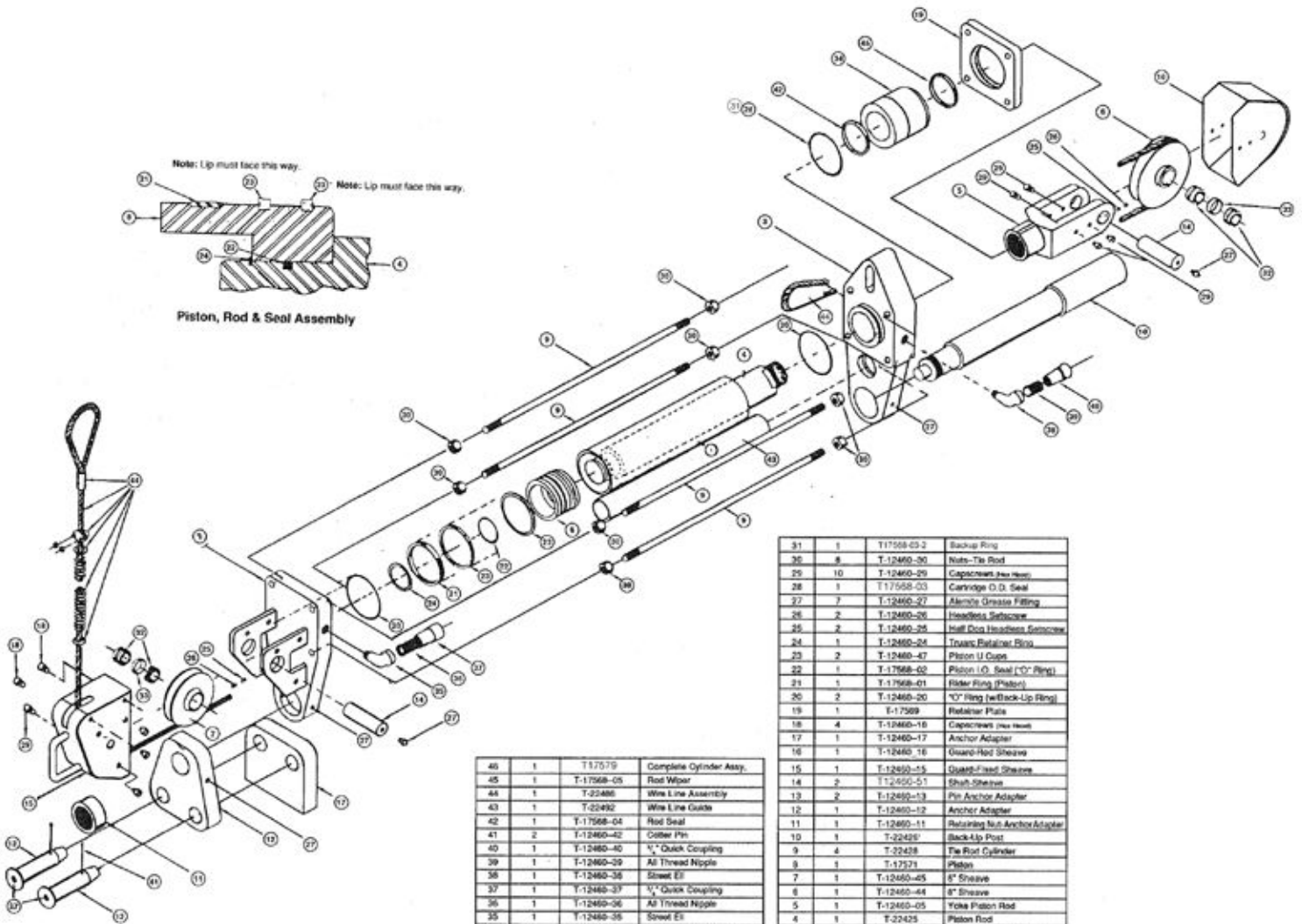
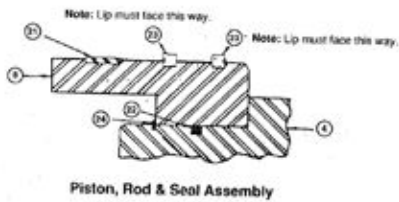
Weight: 750 pounds approximately



MADE IN USA

PART NO	NEEDED	DESCRIPTION
T22427	1	CYLINDER TUBE
T12460-02	1	CYLINDER HEAD-BLIND END
T17572	1	CYLINDER HEAD-ROD END
T22425	1	PISTON ROD
T12460-05	1	YOKE, PISTON ROD
T12460-44	1	8" SHEAVE
T12460-45	1	6" SHEAVE
T17571	1	PISTON
T22428	4	TIE ROD
T22426	1	BACK-UP POST
T12460-11	1	RETAINING NUT-ANCHOR ADAPTER
T12460-12	1	ANCHOR ADAPTER
T12460-13	2	PIN, ANCHOR ADAPTER
T12460-51	2	SHAFT, SHEAVE
T12460-15	1	GUARD-FIXED SHEAVE

HYDRAULIC CATHEAD - CYLINDER ASSEMBLY



Item No.	No. Req'd	Part No.	Description
45	1	T-17570	Complete Cylinder Assy.
45	1	T-17568-05	Rod Wiper
44	1	T-23486	Wire Line Assembly
43	1	T-23492	Wire Line Guide
42	1	T-17568-04	Rod Seal
41	2	T-12460-42	Distal Pin
40	1	T-12460-40	1/2" Quick Coupling
39	1	T-12460-39	All Thread Nipple
38	1	T-12460-38	Sawt Ell
37	1	T-12460-37	1/2" Quick Coupling
36	1	T-12460-36	All Thread Nipple
35	1	T-12460-35	Sawt Ell
34	1	T-17570	Rod Bearing Cartridge
33	2	T-12460-33	Spacer
32	4	T-12460-32	Roller Bearing

31	1	T-17568-03-2	Back-Up Ring
30	8	T-12460-30	Nuts- Tin Head
29	10	T-12460-29	Cap screws Hex Head
28	1	T-17568-03	Carriage O.D. Seal
27	7	T-12460-27	Alum's Grate Fitting
26	2	T-12460-26	Headless Self-Locker
25	2	T-12460-25	Half Dia Headless Self-Locker
24	1	T-12460-24	Tapered Retainer Ring
23	2	T-12460-47	Piston U-Cups
22	1	T-17568-02	Piston I.D. Seal (O' Ring)
21	1	T-17568-01	Rider Ring (Piston)
20	2	T-12460-20	O' Ring (w/Back-Up Ring)
19	1	T-17569	Retainer Plate
18	4	T-12460-18	Cap screws Hex Head
17	1	T-12460-17	Anchor Adapter
16	1	T-12460-16	Guard-Rod Sheave
15	1	T-12460-15	Distal Head Sheave
14	2	T-12460-14	Shaft Sheave
13	2	T-12460-13	Pin Anchor Adapter
12	1	T-12460-12	Anchor Adapter
11	1	T-12460-11	Retaining Nut Anchor Adapter
10	1	T-22425	Back-Up Post
9	4	T-22428	The Rod Cylinder
8	1	T-12571	Piston
7	1	T-12460-05	8" Sheave
6	1	T-12460-04	8" Sheave
5	1	T-12460-05	Yoke Piston Rod
4	1	T-22425	Piston Rod
3	1	T-17572	Cylinder Head Rod End
2	1	T-12460-02	Cylinder Head Blind End
1	1	T-22427	Cylinder Tube

WIRELINER UNIT - SURVEYOR & RETRIEVER

The Surveyor wireline unit has greater pulling power for deep wells, yet is compact enough for convenient rig floor operations.

Size: 36" X 44" X 48"

Weight: 2000 pounds

Line capacity: .092" - 25000' .108" - 20000'

Line speed: 1200' per minute

Line pull: 1538 pounds

Features: 2000 psi hydraulic system with a 15 hp motor, pump, relief valve, hydraulic governor and tank. Three speed transmission. The drum shaft is 1.75" stainless steel, ground and polished. The bearings are 1.75" heavy duty self-aligning pillow blocks. The drum has cast steel flanges welded to alloy steel tubing. The motor and starter are explosion proof, and are UL certified for hazardous areas (Class 1, Group D, Division 1). The controls are positioned for operator efficiency and safety. There are sheet steel guards, panels and drip pan for protection of the operator and the environment. The lifting eye is located at the unit's center of gravity, and there are forklift pockets in the base for easier handling. The unit features a hand crank for rig up and rig down. It is available in two finishes: an offshore coating or high gloss urethane.



The depth measuring meter reads in feet or meters. The meter is mounted using a dual spring balanced rack arm.

Drum performance:

1st gear : 3035 lbs line pull at core wrap , 440 ft/min line speed at flange OD

2nd gear : 1800 lbs line pull at core wrap , 740 ft/min line speed at flange OD

3rd gear : 975 lbs line pull at core wrap , 1375 ft/min line speed at flange OD

Reverse: 3395 lbs line pull at core wrap, 365 ft/min line speed at flange OD

Power Tongs

CE Marked and Registered for International Use.



SL4500

Size range	1-3/16" to 5"
Hydraulic power supply	2,500 psi and 50 gpm (high torque), 2,500 psi and 40 gpm (low torque)
Maximum low/low gear torque and speed	6,500 ft.-lb. and 47 rpm
Maximum low/high gear torque and speed	1,800 ft.-lb. and 166 rpm
Maximum high/low gear torque and speed	8,000 ft.-lb. and 38 rpm
Maximum high/high gear torque and speed	4,000 ft.-lb. and 77 rpm
Torque handle length	24-3/4" (18" tong and backup)
Overall length (Doors closed)	39-7/8"
Overall width	20"
Overall height	57"
Overall weight	600 lb. (with backup 1,000 lb.)

CE Marked and Registered for International Use.



KT5500

Size range	2-1/16" to 5-1/2"
Hydraulic power supply	2,200 psi and 50 gpm
Maximum low gear torque and speed	18,700 ft.-lb. and 16 rpm
Maximum high gear torque and speed	3,750 ft.-lb. and 81 rpm
Torque handle length	36"
Overall length	50"
Overall width	24"
Overall weight	1,140 lb. (2,050 lb. with CLINCHER® backup, 1,700 lb. with FARR backup)
Overall width	20"
Overall height	57"
Overall weight	600 lb. (with backup 1,000 lb.)

Jaws and Dies:

- Wraparound or Dovetail jaws
- Fine Tooth Steel or GRITFACE® dies

Optional Accessories:

- Lift cylinder or spring hanger
- Load cell/Torque gauge
- Rigid or chain bail
- CHROMEMASTER™





KT8625

Size range	2.375" to 8.625"
Hydraulic power supply	2,200 psi and 60 gpm
Max low gear torque and speed	25,000 ft.-lb. and 12 rpm
Max high gear torque and speed	5,000 ft.-lb. and 58 rpm
Tong handle length	36"
Overall tong length	53"
Overall tong width	26"
Overall tong height	46.750"
Overall tong weight	1,550 lb. (2,750 lb. with CLINCHER® backup, 2,550lb. with FARR Cam Style Backup and 4,600 lb. with FARR Mounted Wedge Backup)
Overall height	57"
Overall weight	600 lb. (with backup 1,000 lb.)

Jaws and Dies:

- Wraparound or Dovetail jaws
- Fine Tooth Steel or GRITFACE® dies

Optional Accessories:

- Lift cylinder or spring hanger
- Load cell/Torque gauge
- Rigid or chain bail
- CHROMEMASTER™



LW9625

Size range	2-7/8" to 9-5/8"
Hydraulic power supply	2,500 psi and 60 gpm
Maximum low gear torque and speed	12,000 ft.-lb. and 19 rpm
Maximum high gear torque and speed	3,200 ft.-lb. and 94 rpm
Torque handle length	31"
Overall length	50-3/4"
Overall width	25"
Overall height	33-1/2"
Overall weight	1,200 lb.

Jaws and Dies:

- Wraparound or Dovetail jaws
- Fine Tooth Steel or GRITFACE® dies

Optional Acc.:

- Lift cylinder or spring hanger
- Load cell/Torque gauge
- Rigid bail

Recommended spring hanger:

85-0106X (1,800 lb. capacity)



CE Marked and Registered for International Use.

KT9625

Size Range	2-3/8" to 9-5/8"
Hydraulic power supply	20 gpm at 2,000 psi, 40 gpm at 1000 psi
Maximum low/low gear torque and speed	18,000 ft.-lb. and 14 rpm
Maximum low/high gear torque and speed	9,000 ft.-lb. and 28 rpm
Maximum high/low gear torque and speed	3,500 ft.-lb. and 71 rpm
Maximum high/high gear torque and speed	1,800 ft.-lb. and 142 rpm
Torque arm length	28"
Overall length	49"
Overall width	28"
Overall height	60-1/2"
Overall weight	1,200 lb. (1,700 lb. with FARR Cam)

Optional Backup:
FARR Cam Style 9625

Jaws and Dies:

- Wraparound or Dovetail jaws
- Fine Tooth Steel and GRITFACE® dies

Optional Accessories:

- Lift cylinder or spring hanger
- Load cell/Torque gauge
- Rigid bail



KT10750

Size Range	4-1/2" to 10-3/4"
Hydraulic power supply	2000 psi and 50 gpm
Maximum low gear torque and speed	28,000 ft.-lb. and 7 rpm
Maximum high gear torque and speed	4200 ft.-lb. and 34.8 rpm
Torque handle length	36"
Overall length	54"
Overall width	33"
Overall weight	1800 lb.



CE Marked and Registered
for International Use.

KT13625

Size range	3-1/2" to 13-5/8"
Hydraulic power supply	3,000 psi and 60 gpm
Maximum low gear torque and speed	35,000 ft.-lb. and 10 rpm
Maximum high gear torque and speed	7,000 ft.-lb. and 48 rpm
Torque handle length	36"
Overall length (Doors closed)	59-3/8"
Overall width	33-3/4"
Overall height	39"
Overall weight	1,790 lb. (4,170 lb with LOCKJAW™ Backup, 3,050 lb. with FARR Wedge, and 2,450 lb. with FARR Cam Style Backup)

Optional Backups:

- LOCKJAW™ 15000
- FARR Wedge Style 14625
- FARR Cam Style 13625

Jaws and Dies:

- Wraparound or Dovetail jaws
- Fine Tooth Steel or GRITFACE® dies

Optional Accessories:

- Lift cylinder or spring hanger
- Load cell/Torque gauge
- Rigid bail or chain bail



KT14000

Size range	4-1/2" to 14-3/8"
Hydraulic power supply	2,500 psi and 60 gpm
Maximum low gear torque and speed	50,000 ft.-lb. and 6 rpm
Maximum high gear torque and speed	12,250 ft.-lb. and 24 rpm
Torque handle length	45-1/2"
Overall length	70-3/8"
Overall width	41"
Overall height	37-1/2"
Overall weight	3,220 lb. (5,450 lb. with LOCKJAW™ backup, and 6,300 lb. with FARR Frame Mounted Wedge)

Optional Backups:

- LOCKJAW™ 15000
- FARR Frame Mounted Wedge 14000

Jaws and Dies:

- Dovetail jaws
- Fine Tooth Steel or GRITFACE® dies

Optional Accessories:

- Lift cylinder or spring hanger
- Load cell/Torque gauge
- Rigid bail or chain bail



KT16000

Size Range	7" to 16"
Hydraulic power supply	2,700 psi and 60 gpm
Maximum low gear torque and speed	35,200 ft.-lb. and 9.5 rpm
Maximum high gear torque and speed	5,000 ft.-lb. and 67 rpm
Torque handle length	42"
Overall length	65"
Overall width	41"
Overall height	40"
Overall weight	2,330 lb



CE Marked and Registered for International Use.

KT20000

Size range	7" to 20"
Hydraulic power supply	3,000 psi and 60 gpm
Maximum low gear torque and speed	50,000 ft.-lb. and 7 rpm
Maximum high gear torque and speed	7,700 ft.-lb. and 49 rpm
Torque handle length	52"
Overall length	80-1/4"
Overall width	50-1/2"
Overall height	28"
Overall weight	3,400 lb. (6,700 lb. with FARR Frame Mounted Wedge)

Optional Backups:

- FARR Frame Mounted Wedge 20000
- LOCKJAW™ 21000

Jaws and Dies:

- Dovetail jaws
- Fine Tooth Steel and GRITFACE® dies

Optional Accessories:

- Lift cylinder or spring hanger
- Load cell/Torque gauge
- Rigid bail or chain bail



HD26000

Size range	10-3/4" to 26"
Hydraulic power supply	2,300 psi and 60 gpm
Maximum low gear torque and speed	60,000 ft.-lb. and 5 rpm
Maximum high gear torque and speed	9,000 ft.-lb. and 30 rpm
Torque handle length	55"
Overall length	65"
Overall width	41"
Overall height	40"
Overall weight	3,750 lb. (7,200 lb. with FARR Frame Mounted Wedge)

Optional Backups:

- LOCKJAW™ 25000
- FARR Frame Mounted Wedge 25000

Jaws and Dies:

- Dovetail jaws
- Fine Tooth Steel and GRITFACE® dies

Optional Accessories:

- Lift cylinder or spring hanger
- Load cell/Torque gauge
- Rigid bail or chain bail



HD31000

Size Range	10-3/4" to 31"
Hydraulic power supply	3,500 psi and 60 gpm
Maximum low gear torque and speed	80,000 ft.-lb. and 6 rpm
Maximum high gear torque and speed	38,600 ft.-lb. and 12 rpm
Torque handle length	66"
Overall length	100"
Overall width	66"
Overall weight	6,800 lb.
Overall weight	3,750 lb. (7,200 lb. with FARR Frame Mounted Wedge)

Jaws and Dies:

- Dovetail jaws
- Fine Tooth Steel and GRITFACE® dies

Optional Accessories:

- Lift cylinder or spring hanger
- Load cell/Torque gauge
- Rigid bail



KT14000 High-Torque

Size range	2-7/8" to 14-5/8"
Hydraulic power supply	2,500 psi and 60 gpm
Maximum low gear torque and speed	35,000 ft.-lb. and 8 rpm
Maximum high gear torque and speed	4,700 ft.-lb. and 40 rpm
Torque handle length	36"
Overall length	68-1/2"
Overall width	84"
Overall height	66"
Overall weight	4,000 lb.

Optional Accessories:

- WINCATT® Torque/Turn Management System
- Power Unit and Control Console



CM1312

Size range	1.660" to 7-5/8"
Hydraulic power supply	2,100 psi and 50 gpm
Maximum low gear torque and speed	10,335 ft.-lb. and 21 rpm
Maximum high gear torque and speed	2,000 ft.-lb. and 106 rpm
Torque handle length	10"
Overall length	72"
Overall width	54"
Overall height	59-1/4"
Overall weight	2,300 lb.

Optional Accessories:

- WINCATT® Torque/Turn Management System
- Power Unit and Control Console

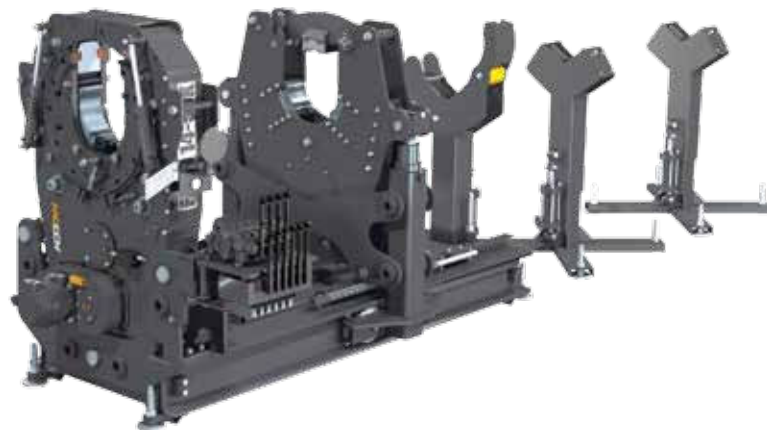


CM14500

Size range	2-7/8" to 14-5/8"
Hydraulic power supply	2,500 psi and 60 gpm
Maximum low gear torque and speed	35,000 ft.-lb. and 8 rpm
Maximum high gear torque and speed	4,700 ft.-lb. and 40 rpm
Torque handle length	36"
Overall length	68-1/2"
Overall width	84"
Overall height	66"
Overall weight	4,000 lb.

Optional Accessories:

- WINCATT® Torque/Turn Management System
- Power Unit and Control Console



14 50K Top Loading Bucking Unit

Max torque (ft.-lb.)	14" - 50K Low/high 50,000/12,000 at 2,200 psi
Max rpm	Low/high 41049 at 50 gpm
Max hydraulic requirement	60 gpm at 1000 psi
Casing jaw sizes	4-1/2" to 14-3/8"
Length	128"
Width	58-1/2"
Height	72-3/4"
Weight	9,300 lb.

Optional Accessories:

- WINCATT® Torque/Turn Management System
- Power Unit and Control Console

Precision Die Technologies



Dies & Inserts

- **BJ Handling Tools**
- **Baash Ross**
- **Kelco**
- **Hydra Rig Bowl & Slip**
- **Bilco**
- **Cavins**
- **Oil Country**
- **Safety Clamps**

Get the highest-quality dies and inserts in the fastest turnaround time. Since 2005, McCoy has been producing GRIT FACE™ Dies and Inserts; today we manufacture all the common dies and inserts used throughout the world.

McCoy inserts are machined, not cast, to provide the accuracy you need for critical applications. Our dies are heat-treated to provide maximum insert life. We also offer a variety of tooth patterns to securely grip the hardest strings of casing, tubing, and drill pipe.

We know that today's hostile well environments often use corrosion-resistant alloy (CRA) tubulars that require

special handling tools. Our GRIT FACE™ Inserts allow you to use your standard handling tools with CRA strings because the GRIT FACE™ Coating prevents contamination and marking. It's economical and allows you to use the tools you have on hand.

Of course, you can't wait when you need tongs or handling tool inserts. We maintain a large inventory that allows us to respond to your needs 24 hours a day, seven days a week, every day of the year. And if you need custom dies and inserts for unique applications, our engineering and manufacturing teams are ready to work with you no matter how great the challenge.

WinCatt™ Torque Turn Management Software



WinCatt™ is a software tool which interacts with external control hardware to provide real time monitoring and control of tubular connection power tong make-up. The graphical user interface and logical software structure combined with powerful control, data acquisition and presentation capabilities enable the user to easily specify make-up parameters, control the make-up process and evaluate quality. WinCatt™ was developed with an emphasis on the users needs for reliability, accuracy, and ease of use. Texas International Oilfield Tools key features are:

Reporting:

- job description
- summary reports of make-up results
- statistical analysis
- real time or post job make-up plots

Function:

- monitors, torque turns, and rotational speed during make-up
- controls speed during make-up (optional)
- controls based on either final torque or final turns
- includes calibration management system
- includes automatic “Start Recording” & “Dump Valve Release”
- includes automatic descriptive comments with optional over-ride
- available with optional pressure test system

Safety:

- limit torque to user specified maximum during idle time

Analysis:

- analyzes make-up to determine: conformance to manufacturer’s specification, shouldering point for premium connections, shouldering time, delta torque, delta turns
- reviews results from previous make-ups

TI 250 Ton Elevator/Spider



T50364Y

**Texas International Mfg.
250 Ton Elevator / Spider**

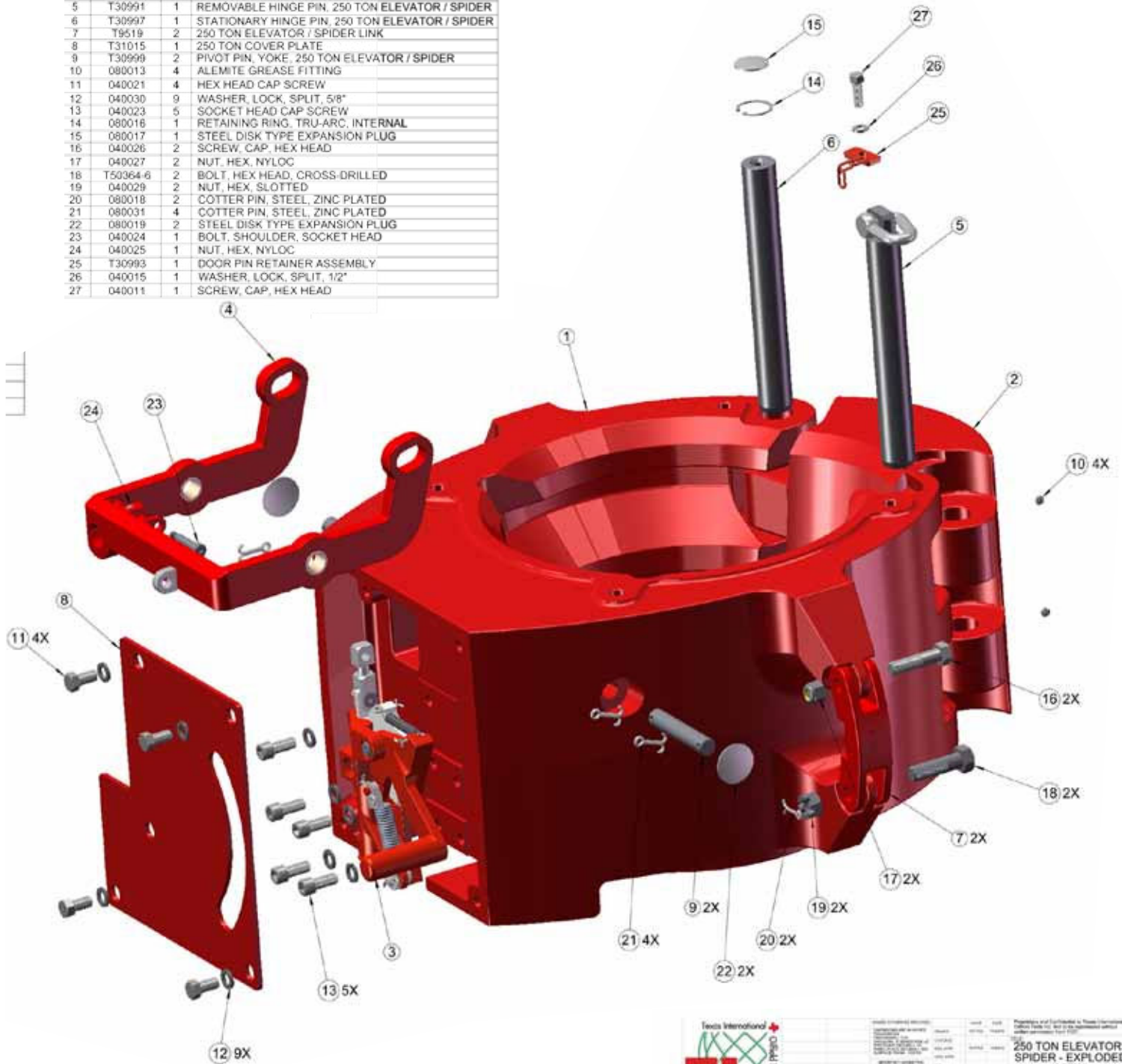
2 3/8" – 7 5/8"

Exploded Views Body & Slip Lock Handle Mechanism

- **T50364Y 250 Ton Elevator / Spider**
- **T28150 Slip Lock Mechanism - Revision A**
- **T28150 Slip Lock Mechanism - Overall Dims**
- **T200372-2 Slip Lock Mechanism - With New Pork Chop**

TI 250 Ton Elevator / Spider Exploded View

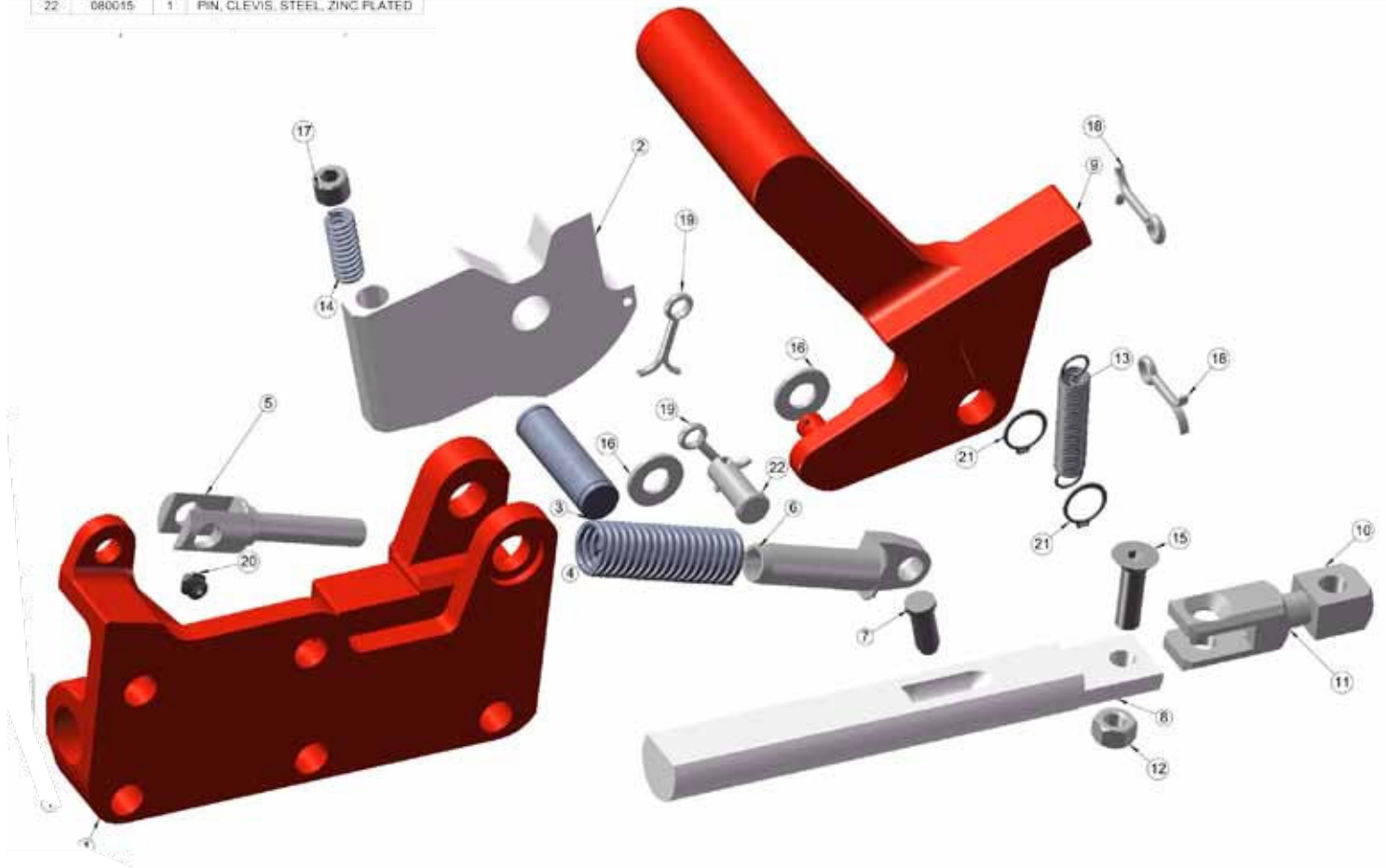
ITEM	PART NO.	QTY	DESCRIPTION
1	T50367	1	BODY, 250 TON ELEVATOR / SPIDER
2	T50368	1	DOOR, 250 TON ELEVATOR / SPIDER
3	T28510	1	SLIP LOCK MECHANISM
4	T31039	1	YOKE, MACHINED, 250 TON ELEVATOR / SPIDER
5	T30991	1	REMOVABLE HINGE PIN, 250 TON ELEVATOR / SPIDER
6	T30997	1	STATIONARY HINGE PIN, 250 TON ELEVATOR / SPIDER
7	T9519	2	250 TON ELEVATOR / SPIDER LINK
8	T31015	1	250 TON COVER PLATE
9	T30999	2	PIVOT PIN, YOKE, 250 TON ELEVATOR / SPIDER
10	080013	4	ALEMITE GREASE FITTING
11	040021	4	HEX HEAD CAP SCREW
12	040030	9	WASHER, LOCK, SPLIT, 5/8"
13	040023	5	SOCKET HEAD CAP SCREW
14	080018	1	RETAINING RING, TRU-ARC, INTERNAL
15	080017	1	STEEL DISK TYPE EXPANSION PLUG
16	040026	2	SCREW, CAP, HEX HEAD
17	040027	2	NUT, HEX, NYLOC
18	T50364-6	2	BOLT, HEX HEAD, CROSS-DRILLED
19	040029	2	NUT, HEX, SLOTTED
20	080018	2	COTTER PIN, STEEL, ZINC PLATED
21	080031	4	COTTER PIN, STEEL, ZINC PLATED
22	080019	2	STEEL DISK TYPE EXPANSION PLUG
23	040024	1	BOLT, SHOULDER, SOCKET HEAD
24	040025	1	NUT, HEX, NYLOC
25	T30993	1	DOOR PIN RETAINER ASSEMBLY
26	040015	1	WASHER, LOCK, SPLIT, 1/2"
27	040011	1	SCREW, CAP, HEX HEAD



	TITLE: 250 TON ELEVATOR / SPIDER - EXPLODED VIEW PART NO: T50364Y SCALE: 1:1 (AS SHOWN) SHEET 1 OF 1
	PROPERTY AND COPYRIGHT © 2008 TEXAS INTERNATIONAL ALL RIGHTS RESERVED. NO PART OF THIS DOCUMENT MAY BE REPRODUCED OR TRANSMITTED IN ANY FORM OR BY ANY MEANS, ELECTRONIC OR MECHANICAL, WITHOUT PERMISSION IN WRITING FROM TEXAS INTERNATIONAL.

TI 250 E / S Slip Handle Exploded View

ITEM	PART NO.	QTY	DESCRIPTION
1	T26273	1	SLIP TYPE LOCK BRACKET
2	T26276-1	1	LOCKING CAM (PORKCHOP)
3	T26277	1	BRACKET PIN
4	T26278	1	LOCK SPRING
5	T26279	1	LOCK SPRING PLUNGER
6	T26280-1	1	LOCK SPRING PLUNGER GUIDE
7	T27458	1	OVERLOAD PLUNGER
8	T28511	1	LOCK ROD
9	T28512	1	SLIP LOCK HANDLE
10	T28513	1	YOKE EYE BOLT
11	T28514	1	YOKE CLEVIS
12	040004	1	NUT, 7/16-14, HEX, STEEL
13	T045039-75	1	TI CAM EXTENSION SPRING
14	T045040-2	1	SLIP LOCK OVERLOAD SPRING
15	040022	1	FLAT HEAD SOCKET HEAD SCREW
16	040014	2	WASHER, FLAT, 1/2"
17	040020	1	SCREW, SET, STEEL, CUP POINT
18	080011	2	CAM SPRING COTTER PIN
19	080012	2	COTTER PIN
20	080013	1	ALEMITE GREASE FITTING
21	080014	2	RETAINING RING
22	080015	1	PIN, CLEVIS, STEEL, ZINC PLATED





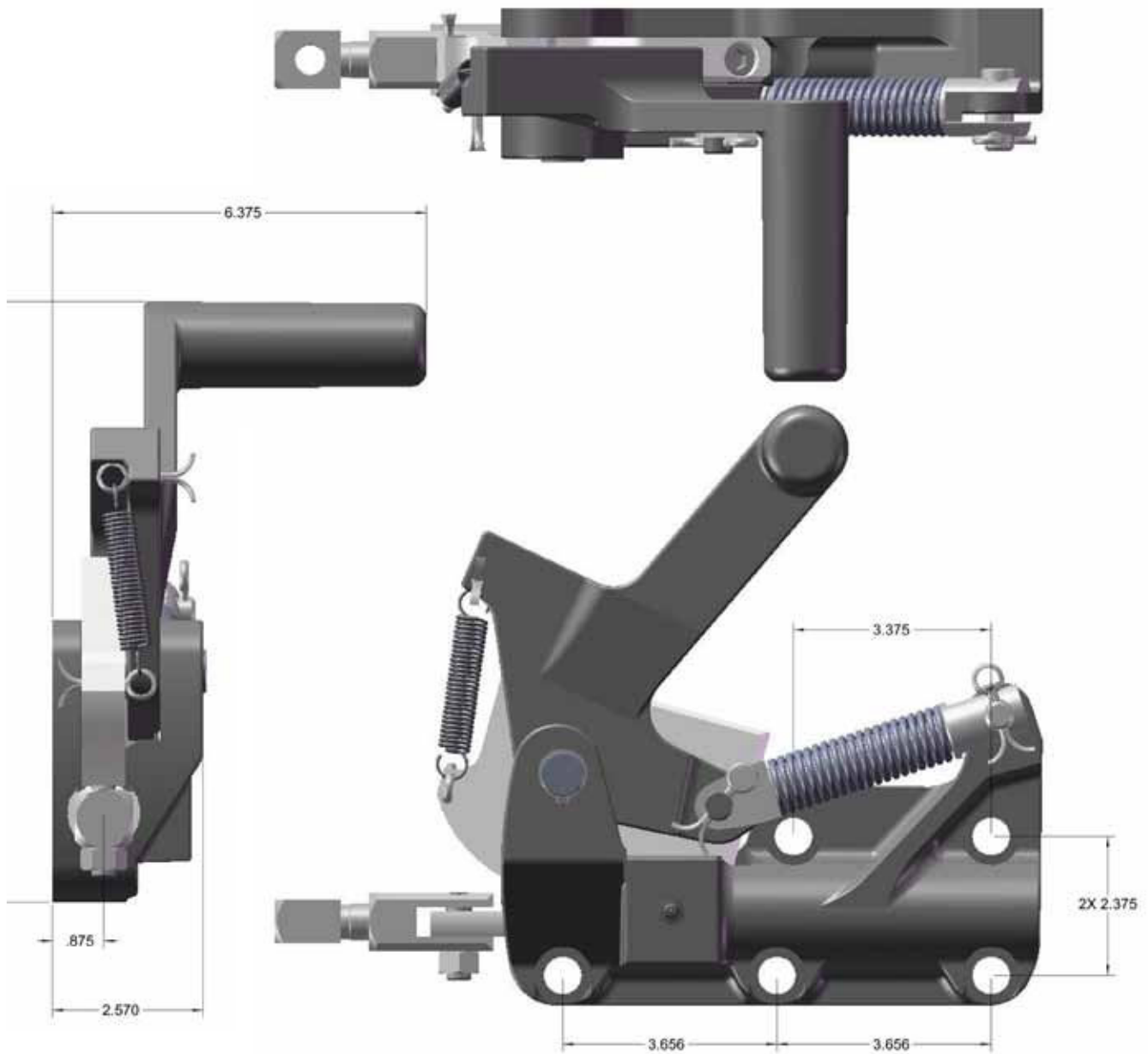
DATE	REV	BY	CHK	APP	DESCRIPTION

Properties and Technical Specifications
SLIP LOCK MECHANISM
EXPLODED VIEW
 D T28510 A
 SCALE: 1:1 WEIGHT: SHEET 1 OF 1

T28510 Slip Lock Mechanism - Revision A



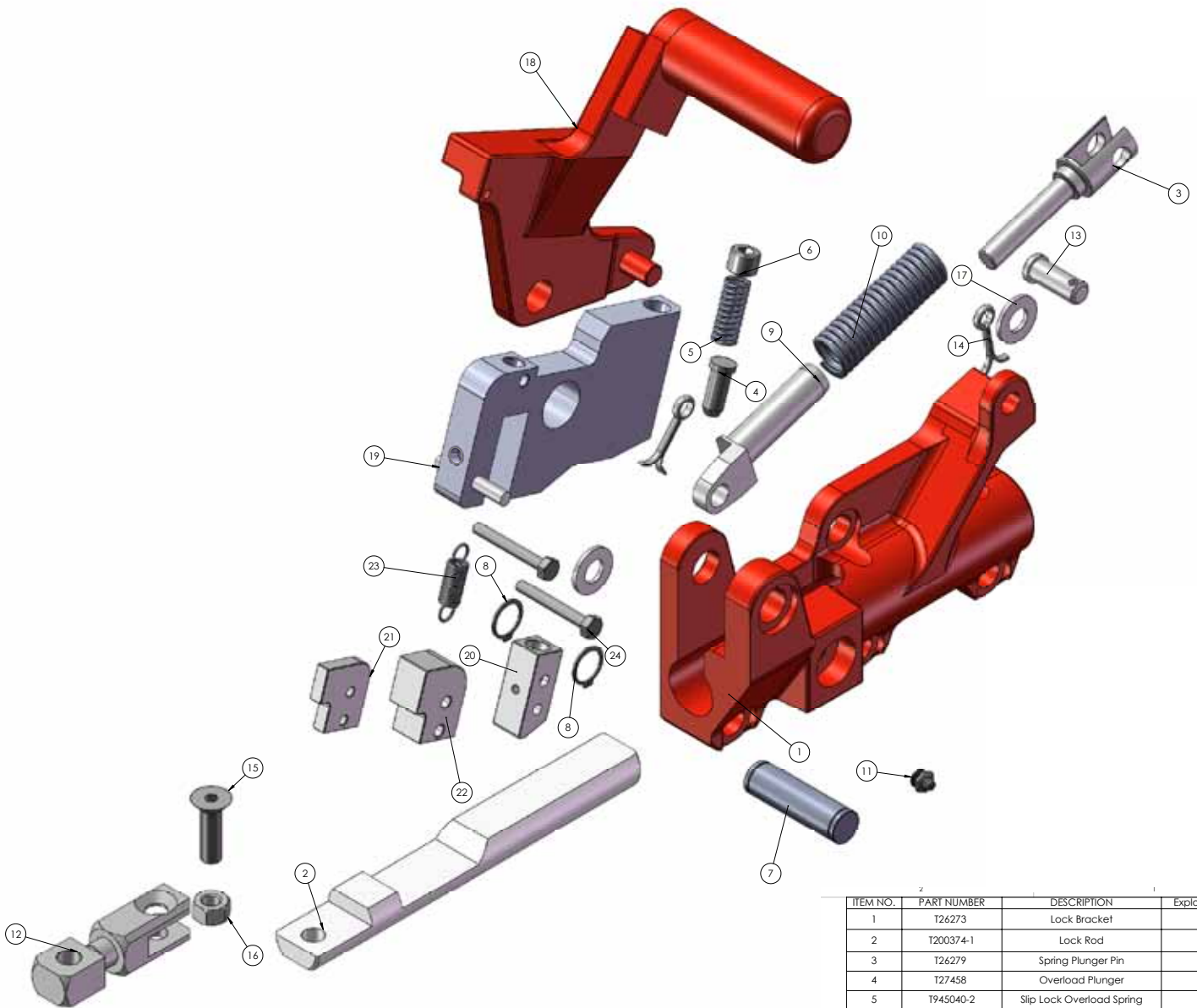
TI 250 E / S Slip Handle Exploded View



	TITLE SLIP LOCK MECHANISM	
	DWT D	REV A
SCALE: 1:1 (WEIGHT)		SHEET 1 OF 1

T28510 Slip Lock Mechanism - Overall Dims

Exploded View Locking Mechanism w/ Pork Chop



ITEM NO.	PART NUMBER	DESCRIPTION	Exploded/QTY.
1	T26273	Lock Bracket	1
2	T200374-1	Lock Rod	1
3	T26279	Spring Plunger Pin	1
4	T27458	Overload Plunger	1
5	T945040-2	Slip Lock Overload Spring	1
6	040020	Screw,Set,Steel,Cup,Point	1
7	T26277	Bracket Pin	1
8	080014	Retaining Ring	2
9	T26280-1	Plunger Guide	1
10	T26278	Spring	1
11	080013	Alumite Zerk Fitting	1
12	T28514	Clevis Assembly	1
13	080015	Clevis Pin .500 X 1.25	1
14	080012	Cotter Pin	2
15	040022	Flat Head Socket Head Screw	1
16	040142	Nut,7/16-14,Hex,Thin,Nyloc	1
17	040014	Washer,Flat,1/2"	2
18	T28512-2	Lock Handle	1
19	T200373-1	Lock Plate Assembly	1
20	T200375	Lock Finger	1
21	T200376	Lock Back Support Plate	1
22	T200377	Lock Front Support Plate	1
23	979478-143	Extension Spring	1
24	040147	HEX BOLT 1/4-20 X 1" LONG	2



UNLESS OTHERWISE SPECIFIED, DIMENSIONS ARE IN INCHES.		NAME	DATE	Proprietary and Confidential to Texas International Clevis Tools, Inc. Not to be reproduced without written permission from TIOT.
DESIGNED BY	10/12/11	DRAWN	10/12/11	TITLE:
CHECKED		ENG. APPE.	10/12/11	SLIP LOCK MECHANISM EXPLODED VIEW
MFG. APPE.		VAL. APPE.	10/12/11	SIZE DWG. NO.
				D T200372-2 REV A
				SCALE: 1:1, WEIGHT: SHEET 1 OF 1
MATERIAL		COMMENTS		
FINISH				
NEST ASST	USED ON			
APPLICATION				

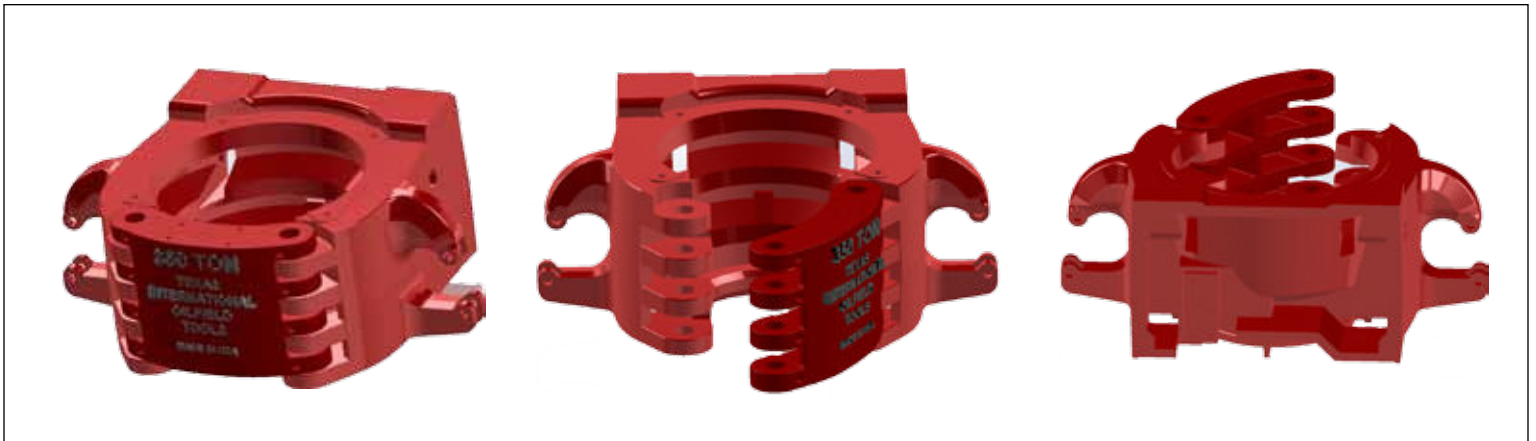


TI 350 Ton Elevator/Spider

Available Soon in Summer 2012



Slip sizes: 4-1/2" to 13-5/8"



Varco® 250 Ton Elevator / Spider



Varco® / BJ 250 Ton Elevator / Spider 2 3/8" – 7 5/8"

Varco® / BJ 250 Ton - 7-5/8"	
50364Y	Assembly complete, manual
50006260Y	Assembly complete, air operated
31021	Guide bell assembly, elevator
50422-2	Upper guard assembly, spider
31008	Spider adapter plate

Slip Size	Pipe Size	Slip Assembly Part No.	Insert Part No.		Insert Retainer Part No.	Top Guide Plate Assembly	Bottom Guide Plate Assembly
3 1/2"	2 3/8"	50006291-238	24777	18	31003	51920	51925
	2 3/8"	50006291-278	25780	18	31004	51920	51925
	3 1/2"	50006291-312	16441	18	31005	51920	51925
4 1/2"	3 1/2"	50006292-312	24779	27	31177	51921	51926
	4"	50006292-400	24781	27	31177	51921	51926
	4 1/2"	50006292-412	BJ16408	27	31177	51921	51926



BJ Elevator / Spider Combination to 1,000 Tons

VARCO® / BJ 350 TON - 4-1/2" to 13-3/8"						
P/N		Description				
Weight 3050 lb (Man,) 3500 lb (Air)						
33492		Body Assy. Complete Less Slip, Guide Plate & Air Supply				
Hose Assemblies (Air)						
34301		Body Assembly Complete Less Slip & Guide Plate				
Assemblies (Manual)						
28599		Casing Guide Bell Assembly 28570-1 Upper Guard Assembly				
27000		Spider Adapter Plate 27 1/2" RT				
31100		Spider Adapter Plate 37 1/2" RT (except EMSCO)				
32698		Spider Adapter Plate 37 1/2" RT EMSCO				
API Pipe Sizes (in)	API Pipe Sizes (mm)	Spider Guide Plate Assy.	Elevator Guide Plate Assy.	Slip Assy. with Inserts	Inserts	Qty.
4 1/2	114.30	51949	51936	28556-8	24785	36
5	127.00	51950	51936	28556-4	24783	36
5 1/2	139.70	51950	51936	28556	16407	36
5 3/4	146.05	51951	51937-1	28551-10	29254	48
6	152.40	51951	51937-1	28551-8	24785	48
6 5/8	168.28	51952	51937	28551-3	24748	48
6 5/8	168.28	51952	51937	28546-8	25474	60
7	177.80	51952	51937	28551	16407	48
7	177.80	51952	51937	28546-5	26750	60
7 5/8	193.68	51953	51938	28546	16407	60
7 5/8	193.68	51953	51938	28541-8	25474	60
8 5/8	219.08	51954	51939	28541	15660	72
8 5/8	219.08	51954	51939	28536-8	25474	72
9 5/8	244.48	51955	51940	28536	15660	72
9 5/8	244.48	51955	51940	28531-11	33249	72
10 3/4	273.05	51956	51941	28531	15660	72
10 3/4	273.05	51956	51941	28526-8	25474	72
11 3/4	298.45	51957	51942	28526	15660	72
12 3/4	323.85	51958	28571	28521-5	32700	84
13 3/8	339.73	51958	28571	28521	15660	84

Varco® / BJ 350 Ton Elevator / Spider

Varco® / BJ
350 Ton Elevator / Spider
Slip sizes: 4-1/2" to 13-3/8"



VARCO® / BJ 350 TON - 4-1/2" to 13-3/8"

Slip Part No.	Slip Part No.	Insert No.	Qty Inserts
28556Y8	5 1/2 x 4 1/2" Slip Assy replaced by 50006480Y412	6 x 4 1/2" Slip Assy 31157	36
28556Y4	5 1/2 x 5" Slip Assy replaced by 50006480Y500	6 x 5" Slip Assy 24785	36
28556Y	5 1/2 x 5 1/2" Slip Assy replaced by 50006480Y512	6 x 5 1/2" Slip Assy 24781	36
28551Y10	7 x 5 3/4" Slip Assy replaced by 50006480Y534	6 x 5 3/4" Slip Assy 50006544	36
28551Y8	7 x 6" Slip Assy replaced by 50006480Y600	6 x 6" Slip Assy 16407	48
28551Y3	7 x 6 5/8" Slip Assy replaced by 50006485Y658	8 x 6 5/8" Slip Assy 31157	60
28551Y	7 x 7" Slip Assy replaced by 50006485Y700	8 x 7" Slip Assy 25474	60
28546Y8	7 5/8 x 6 5/8" Slip Assy replaced by 50006485Y658	8 x 6 5/8" Slip Assy 31157	60
28546Y5	7 5/8 x 7" Slip Assy replaced by 50006485Y700	8 x 7" Slip Assy 25474	60
28546Y	7 5/8 x 7 5/8" Slip Assy replaced by 50006485Y758	8 x 7 5/8" Slip Assy 24748	60
28541Y8	8 5/8 x 7 5/8" Slip Assy replaced by 50006785Y758	8 5/8 x 7 5/8" Slip Assy 25474	60
28541Y	8 5/8 x 8 5/8" Slip Assy replaced by 50006785Y858	8 5/8 x 8 5/8" Slip Assy 15660	60
28536Y8	9 5/8 x 8 5/8" Slip Assy replaced by 50006785Y858	8 5/8 x 8 5/8" Slip Assy 15660	60
28536Y	9 5/8 x 9 5/8" Slip Assy replaced by 50006490Y958	10 3/4 x 9 5/8" Slip Assy 33249	72
28531Y11	10 3/4 x 9 5/8" Slip Assy replaced by 50006490Y958	10 3/4 x 9 5/8" Slip Assy 33249	72
28531Y	10 3/4 x 10 3/4" Slip Assy replaced by 50006490Y1034	10 3/4 x 10 3/4" Slip Assy 15660	72
28526Y8	11 3/4 x 10 3/4" Slip Assy replaced by 50006490Y1034	10 3/4 x 10 3/4" Slip Assy 15660	72
28526Y15	11 3/4 x 11 3/4" Slip Assy replaced by 50006495Y1134	13 3/8 x 11 3/4" Slip Assy 50006545	84
28521Y5	13 3/8 x 12 3/4" Slip Assy replaced by 50006495Y1234	13 3/8 x 12 3/4" Slip Assy 32700	84
28521Y	13 3/8 x 13 3/8" Slip Assy replaced by 50006495Y1338	13 3/8 x 13 3/8" Slip Assy 15660	84
38383Y	13 5/8" Slip Assy replaced by 50006795Y1358	13 5/8 x 13 5/8" Slip Assy 32477	84



Varco® / BJ 350 Ton & 500 Ton Elevator / Spider

Varco® / BJ 350 Ton Elevator / Spider Slip sizes: 4-1/2" to 13-3/8"

Update the description of the part nos below and put on inactive not used previously in 350 ton slips.

50006485Y	replaced by	50006485Y658
50006485Y4	replaced by	50006485Y700
50006485Y8	replaced by	50006485Y758
50006490Y5	replaced by	50006490Y958
50006490Y	replaced by	50006490Y1034
50006495Y11	replaced by	50006495Y1134
50006495Y5	replaced by	50006495Y1234
50006495Y	replaced by	50006495Y1338

Enter new part nos:

6 x 4 1/2" Slip Assy	For 350 Ton E/S
6 x 5" Slip Assy	For 350 Ton E/S

New part nos. continued

50006485Y658	8 x 6 5/8" Slip Assy	For 350 Ton E/S
50006485Y700	8 x 7" Slip Assy	For 350 Ton E/S
50006485Y758	8 x 7 5/8" Slip Assy	For 350 Ton E/S
50006785Y758	8 5/8 x 7 5/8" Slip Assy	For 350 Ton E/S
50006785Y858	8 5/8" x 8 5/8" Slip Assy	For 350 Ton E/S
50006490Y958	10 3/4 x 9 5/8" Slip Assy	For 350 Ton E/S
	10 3/4 x 10 3/4" Slip Assy	For 350 Ton E/S

Varco® 500 Ton Elevator / Spider Slip sizes: 16" to 24-1/2"



**Varco® 500 Ton Elevator / Spider
4-1/2" to 14" not shown**

Varco® 500 Ton Elevator / Spider

VARCO® 500 TON - 4-1/2" to 14"					
P/N	Description				
13800Y	Elevator/Spider Less Slips & Guides 5000 lb (2268 kg)				
11798	Bell Guide Kit 400 lb (181 kg)				
19276	Spider Adapter Plate 700 lb (318 kg)				
11881	Airline and Filter Assembly				
Casing Size (In.)	Elevator Bottom Guide P/N	Spider Top Guide P/N	Slip Set w/Inserts P/N	Insert Set1 P/N	Qty
4 1/2	11787	V18419-1	13842Y3	2168-16B-32	48
5	11788	V18419-2	13842Y2	2169-16B-32	48
5 1/2	11789	V18419-3	13842Y1	2170-48	48
6 5/8	11791	18419-4	13841Y3	2632-24B-48	72
7	11791	18419-4	13841Y2	2323-24B-48	72
7 5/8	11792	18419-5	13841Y1	2633-72	72
7 3/4	11792	18419-5	13841Y4	2649-72	72
8 5/8	11793	18419-6	13840Y3	2640-21B-64	96
8 3/4	11793	18419-5	13840Y5	26550-32B-64	96
9 5/8	11794	18419-7	13840Y1	2633-96	96
9 3/4	71231	18419-15	13840Y4	2649-96	96
9 7/8	71231	18419-15	13840Y2	2649-96	96
10 3/4	11795	18419-8	13839Y3	2640-40B-80	120
10 7/8	11795	18419-8	13839Y4	2650-40B-80	120
11 3/4	11796	18419-9	13839Y2	2637-120	120
11 7/8	11796	18419-9	13839Y1	2651-120	120
13 3/8	11797	18419-10	70734Y5	2636-40B-80	120
13 1/2	71228	18419-12	70734Y4	2652-40B-80	120
13 5/8	71228	18419-12	70734Y3	2653-40B-80	120
13 3/4	71228	18419-12	70734Y2	2655-40B-80	120
14	15939	18419-11	70734Y1	2635-120	120
NOTES: Numbers followed by the letter "B" indicate beveled inserts (required at top and bottom of each slot)					
VARCO® 500 TON - 16" to 24-1/2"					
P/N	Description				
15740Y	Elevator/Spider Less Slips and Guides 10.500 lb (4763 kg)				
19001	Bell Guide Kit 600 lb (272 kg)				
16552	Spider Adapter Plate 27000 lb (1225 kg)				
11881	Airline and Filter Assembly				
Casing Size (In.)	Elevator Bottom Guide P/N	Spider Top Guide P/N	Slip Set w/Inserts P/N	Insert Set1 P/N	Qty
16	15794-6	73139-6	15790Y6	2636	180
18	16184	73138	15790Y4	2635-180	180
18 5/8	15794	73137	15790Y3	13868-4201	420
250	15793	73136	15790Y2	2635-1880	180
22	50006055	50006074	15790Y5	2635-180	180
24	15792	73135	15790Y1	2635-180	180
24 1/2	74818	74817	15226Y1	2635	180



Varco® 750 Ton Elevator / Spider



Varco® 750 Ton Elevator / Spider Spider sizes: 6-5/8" to 14"

VARCO® 750 TON - 6-5/8" to 14"

P/N	Description				
16150Y	Elevator/Spider Less Slips and Guides 7500 lbs (3402 kg)				
19002	Bell Guide Kit 420 lbs (188 kg)				
17163	Spider Adapter Plate 1800 lbs (816 kg)				
11881	Airline and Filter Assembly				
Casing Size (In.)	Elevator Bottom Guide P/N	Spider Top Guide P/N	Slip Set w/ Inserts P/N	Insert Set P/N	Qty
6 5/8	11791	18419-4	16182Y4	2632-24B-60	84
7	11791	18419-4	16182Y8	2623-24B-60	84
7 5/8	11792	18419-5	16182Y7	2633-84	84
7 3/4	11792	18419-5	15182Y21	2649-84	84
8 5/8	11793	18419-6	16182Y6	2640-32B-80	112
8 3/4	11793	18419-6	16182Y20	2650-32B-80	112
9 5/8	11794	18419-7	16182Y3	2633-112	112
9 3/4	71231	18419-15	16182Y19	2649-112	112
9 7/8	71231	18419-15	16182Y18	2649-112	112
10 3/4	11795	18419-8	16182Y5	2640-40B-100	140
10 7/8	11795	18419-8	16182Y17	2650-40B-100	140
11 3/4	11796	18419-9	16182Y2	2637-140	140
11 7/8	11796	18419-9	16182Y16	2651-140	140
13 3/8	11797	18419-10	16182Y10	2637-140	140
13 1/2	71228	18419-12	16182Y12	2652-40B-100	140
13 5/8	71228	18419-12	16182Y11	2653-40B-100	140
13 3/4	71228	18419-12	16182Y13	2655-40B-100	140
14	15939	18419-11	16182Y9	2635-140	140

NOTES: 1. Numbers followed by the letter "B" indicate beveled inserts (Required at top and bottom of each slot).



**Varco® Flush Mount Spider
FMS 375, 500 TON -14”
Multi-Functional Control Panel**

VARCO® Spider, FMS 375					
PIPE SIZE	TOP GUIDE FOR CASING	BOTTOM GUIDE CASING	SLIP FOR BODY SIZE	SLIP SET WITH INSERTS	INSERT SET
4 1/2	18419-1	11787	5 1/2	13842Y3	2168-16B-32
5	18419-2	11788	5 1/2	13842Y2	2169-16B-32
5 1/2	18419-3	11789	5 1/2	13842Y1	2170-48
6 5/8	18419-4	11791	7 5/8	13841Y3	2632-24B-48
7	18419-4	11791	7 5/8	13841Y2	2623-24B-48
7 5/8	18419-5	11792	7 5/8	13841Y1	2633-72
8 5/8	18419-6	11793	9 5/8	13840Y3	2640-32B-64
9 5/8	18419-7	11794	9 5/8	13840Y1	2633-96
10	18419-15	11794	9 5/8	81268Y	2633-96
10 3/4	18419-8	11795	11 3/4	13839Y3	2640-40B-80
11 3/4	18419-9	11796	11 3/4	13839Y2	2637-120
12	18419-14	71229	11 3/4	71763Y1	2651-120
13 3/8	18419-10	71228	14	70734Y5	2636-40B-80
13 5/8	18419-12	11797	14	70734Y3	2653-40B-80
14	18419-11	15939	14	70734Y1	2635-120
Hydraulic Working Pressure (PSI)	Power Down Force (Tons)	Applied Maximum Back-Up Torque (Ft Lbs)	FMS ADAPTER PLATES		
2500	46	35000	Oilwell	200990-11	
2200	40	30800	Emsco	200991-11	
2000	36	28000	National	200995-11	
1800	33	25200	Ideco	201430-1	
1600	29	22400			
1400	25	19600			
1200	22	16800			
1000	18	14000			

Elevator/Spider Inventory

VARCO® & BJ ELEVATOR / SPIDERS
IN-STOCK & READY FOR DELIVERY
Texas International Oilfield



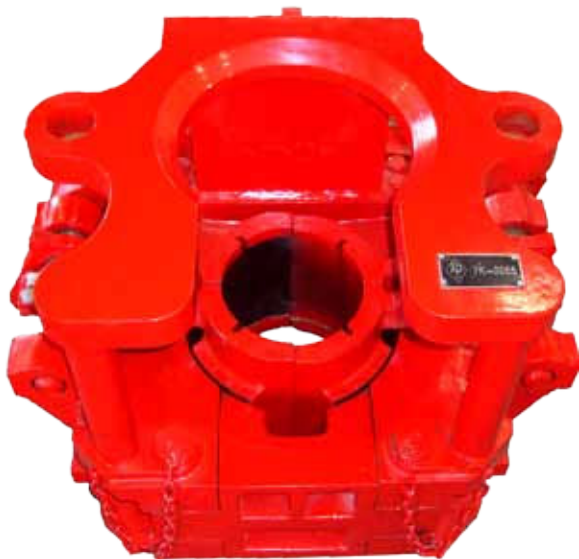
**TI Mfg. Single Joint Elevator
5 Ton, 2-3/8" to 30"**



TI Mfg. API BOWL

**8 5/8" 100 TON &
8 5/8" 150 TON
AVAILABLE**

10 3/4" 100 TON



**TI Mfg. Pneumatic
Tubing Spider
Type C, CHD, E, F**

TI Mfg. Hinged Spiders w/Bushings



TI Mfg. HINGED SPIDER 36" 500 TON w/ 4" TAPER

Bushing Reducer:
36x30, 36x26, 36x24, 36x20

TI Mfg. HINGED SPIDER 13-3/8" 200 TON

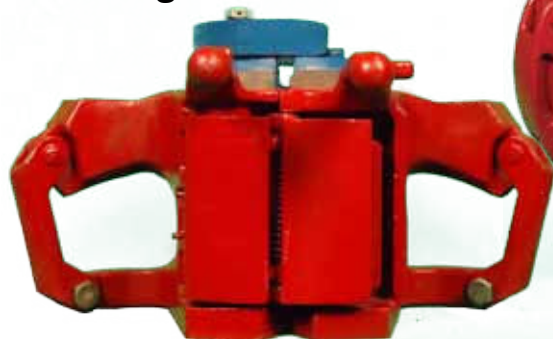
Also available in 20" 200 Ton



TI Mfg. CASING BUSHING CB, CUL, CU

Slip Type Elevators

TI Mfg. MYT 40 Ton



Varco® HYT 150 Ton



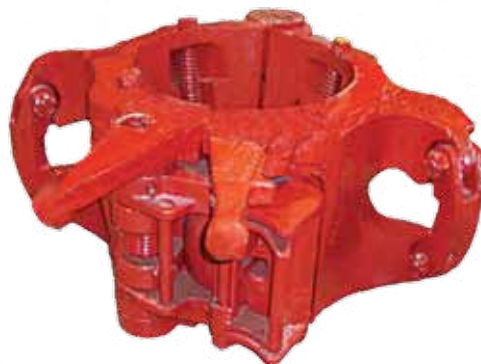
Varco® YT 75 Ton



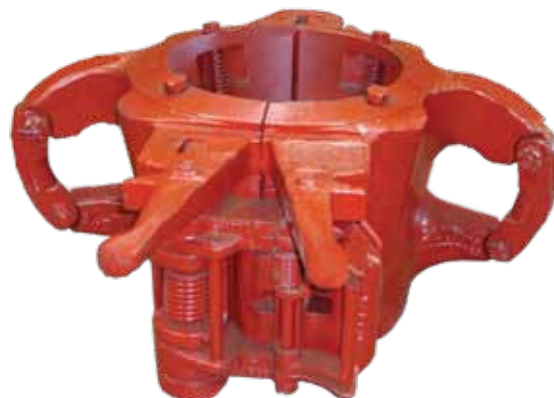
Varco® YC 75 Ton



Varco® MYC 125 Ton



Varco® HYC 200 Ton



Slip Type Elevators Y Series						
Size (inches)	Size (mm)	Type	Frame Nr.	Cap. Tons	Weight (lb)	Mass (kg)
1.315-2 7/8	33-73	MYT	29328Y	40	148	67
1.315-3 1/2	33-89	YT	55600Y	75	355	161
2 3/8-3 1/2	60-89	HYT	3924Y	150	750	336
3 1/2-7	89-178	YC	24140Y	75	445	206
3 1/2-7	89-178	MYC	200360Y	125	750	336
2 7/8-7 5/8	89-194	HYC		200	997	452
2 7/8-7 5/8	89	HYC A0		200	1465	665

Collar Type - Center Latch Elevators

TI Mfg. TA65



TI Mfg. TA100



TI Mfg. TA150



Collar Type Center Latch Elevators Series

Size (inches)	Size (mm)	Type	Frame Nr.	Cap. Tons	Weight (lb)	Mass (kg)
2 3/8-2 7/8	60-73	TA	32383Y	100	100	45
3 1/2-5	89-127	TA	32384Y	100	158	72
4 3/4-8 5/8	121-219	TA	200000Y	100	410	186
4 1/2-8 5/8	114-219	TA	32754Y	150	430	195
4 3/4-8 5/8	121-219	TA A0	35636Y	150	530	240
8 1/2-11 1/4	216-286	TA	39342Y	150	430	195
8 1/2-11 1/4	216-286	TA A0	39343Y	150	550	250
2 3/8-4 1/2	60-114	RGA	201360Y	200	162	73
3 1/2-7	102-178	GA	200034Y	350	555	252
3 1/2-7	102-178	GA A0	200035Y	350	725	330
7-7 5/8	178-194	GGA	201385Y	350	695	316
7-7 5/8	178-194	GGA A0	201380Y	350	998	454

Our new facility boasts an innovative Technology and Testing center as well as a Rebuild and Remanufacture Center to cater to all of your handling tool needs in the most cost effective way. At Texas International, our goal to continue improving our product line and customer service shows our commitment to be a leader in the industry!

SLX Side Door Elevator

TI Mfg. SLX 100 Ton



TI Mfg. SLX 250 Ton



TI Mfg. SLX 150 Ton



TI Mfg. SLX 350 Ton



TI Mfg. SLX 500 Ton



Varco® SLX Side Door Elevator

COLLAR TYPE SIDE DOOR ELEVATORS X SERIES						
Size (In)	Size (mm)	Type	Frame Nr.	Cap. Tons	Weight (lb)	Mass (kg)
2 3/8-2 7/8	60-73	SLX	33693Y	100	75	34
3 1/2-4	89-102	SLX	33809Y	100	105	48
4 1/2-5 1/2	110-140	SLX	33854Y	100	175	79
5 1/2-8 5/8	140-219	SLX	31239Y	150	325	147
9 5/8-10 3/4	245-273	SLX	33950Y	150	420	191
11 3/4-13 3/8	298-340	SLX	33982Y	150	500	227
16	406	SLX	34087Y	150	575	261
18 5/8-20	473-508	SLX	33632Y	150	700	318
26-30	660-762	SLX DD	52755Y	150	1320	600
6 5/8-7 5/8	168-194	SSD	71273Y	250	600	273
8 5/8-10 3/4	219-273	SSD	71274Y	250	620	282
11 3/4-14	298-356	SDD	71275Y	250	635	289
18 5/8-20	473-508	SX	30598Y	250	1100	499
22-24 1/2	559-622	SLX	34175Y	250	1000	454

SLX & SMX Side Door Elevator

AUXILIARY ELEVATORS S SERIES						
Size		Type	Frame	Cap.	Weight	
Inches	mm		Nr.	Tons	Lb	Kg
2 3/8-3 1/2	60-89	SJL	70499Y	5	45	20
4-5 1/2	102-140	SJL	70500Y	5	51	23
6-7 5/8	152-194	SJL	70501Y	5	72	33
8 5/8-10 3/4	219-273	SJL	70502Y	5	98	44
11 3/4-13 3/8	298-340	SJL	70503Y	5	121	55
14	356	SJC	72782Y10	5	140	61
16-20	406-508	SJL	70504Y	5	210	95
21-24 1/2	533-622	SJL	70505Y	5	270	123
2 7/8-5 1/2	72-140	SPL 5o	200008Y	5	77	35
5 1/2-7 5/8	140-194	SPL 5o	200010Y	5	108	49
8 5/8-9 5/8	219-244	SPL 5o	200012Y	5	145	66
9 7/8	251	SPL 5o	200029Y	5	145	66
10 3/4	273	SPL 5o	200013Y	5	160	73
2 3/8-4 1/2	60-114	SPL 12o	200014Y	5	86	39
2 7/8-5	73-127	SPL 18o	200009Y	5	79	36

Varco® SLX Side Door Elevator

VARCO SLX 150 TON



Varco® SMX Side Door Elevator



Extensive Stock in Casing Tools



Con-Tech Thread Protectors

Stocking Distributor



Connection Technology, LLC

A SUPERIOR ENERGY SERVICES COMPANY

Drill Pipe Thread Protectors available in all sizes.



Drill Pipe Elevator

**TI Mfg., Varco®, AOT
MGG, GG, RG, HGG**



Size (In)	Size (mm)	Type	AOT	Frame Nr.	Cap. Tons	Weight (lb)	Mass (kg)
18o Center Latch Elevator G Series							
2 3/8-5	60-127	MG	E30157	30157Y	100	200	91
2 3/8-3 1/2	60-89	RGG	E30156	200680Y	150	308	140
3 1/2-5 1/2	89-140	MGG	E35005	35005Y	250	575	261
3 1/2-5 1/2	89-140	MGG AO	E35005	36056Y	250	720	327
4-5 1/2	102-140	GG	E31066	31068Y	350	715	324
4-5 1/2	102-140	GG AO	E31066	35143Y	350	1018	463
4-6 5/8	102-168	HGG	E70013	70013Y	500	1000	454
4-6 5/8	102-168	HGG AO	E70013	70222Y	500	1500	680
18o Center Latch Elevator G Series with wear bushing							
3 1/2-5 1/2	89-140	MGG		200058Y	250	585	266
3 1/2-5 1/2	89-140	MGG AO		200057Y	250	730	332
4-5 1/2	102-140	GG		200056Y	350	725	329
4-5 1/2	102-140	GG AO		200024Y	350	1028	468
4 1/2-5 1/2	114-140	HGG		200060Y	500	1010	459
5-6 5/8	168	HGG		200062Y	500	1010	459

Varco® Elevator Weldless Links



P/N	SIZE (in)	SIZE (mm)	CAP/SET TONS	WEIGHT/SET	
				(lb)	(kg)
16363Y1060	2 1/4 x 60	57x154	250	480	218
16363Y1072	2 1/4 x 72	57x1829	250	530	241
16363Y1084	2 1/4 x 84	57x2134	250	580	264
16363Y1096	2 1/4 x 96	57x2438	250	630	286
16363Y1108	2 1/4 x 108	57x2743	250	680	309
16363Y1132	2 1/4 x 132	57x3353	250	780	355
16363Y1168	2 1/4 x 168	57x4267	250	774	352
26940Y1060	2 3/4 x 60	70x1524	350	620	282
26940Y1072	2 3/4 x 72	70x1829	350	685	311
26940Y1084	2 3/4 x 84	70x2134	350	740	336
26940Y1096	2 3/4 x 96	70x2438	350	805	366
26940Y1108	2 3/4 x 108	70x2743	350	870	395
26940Y1120	2 3/4 x 120	70x3048	350	935	425
26940Y1132	2 3/4 x 132	70x3353	350	1000	454
26940Y1144	2 3/4 x 144	70x3688	350	1065	484
26940Y1132	2 3/4 x 132	70x3353	350	1000	454
26940Y1150	2 3/4 x 150	70x3810	350	1095	498
26940Y1168	2 3/4 x 168	70x4267	350	1190	541
26940Y1180	2 3/4 x 180	70x4572	350	1255	571
26940Y1192	2 3/4 x 192	70x4876	350	1320	600
26940Y1216	2 3/4 x 216	70x5486	350	1450	659
26940Y1240	2 3/4 x 240	70x6096	350	1580	718
26940Y1290	2 3/4 x 290	70x7366	350	1852	842
26940Y1360	2 3/4 x 360	70x9144	350	2156	980
26940Y1480	2 3/4 x 480	70x12192	350	2878	1308
15386Y1108	2 3/4 x 480	70x12192	350	920	418
25469Y1072	3 1/2 x 72	89x1829	500	704	320

Elevator Weldless Links



Texas International Mfg. Links

- 1-3/4" x 72" - 150 Ton
- 1-3/4" x 84" - 150 Ton
- 1-3/4" x 96" - 150 Ton
- 2-3/4" x 192" - 350 Ton
- 2-3/4" x 216" - 350 Ton

P/N	SIZE (in)	SIZE (mm)	CAP/SET TONS	WEIGHT/SET (lb)	(kg)
	2 3/4" x 192"	89x4064	350	1927	876
	2 3/4" x 216"	89x4267	350	2000	909
25469Y1160	3 1/2 x 160	89x4064	500	1927	876
25469Y1168	3 1/2 x 168	89x4267	500	2000	909
25469Y1180	3 1/2 x 180	89x4572	500	2110	959
25469Y1192	3 1/2 x 192	89x4826	500	2202	1001
25469Y1216	3 1/2 x 216	89x5486	500	2112	960
25469Y1240	3 1/2 x 240	89x6096	500	2596	1180
25469Y1264	3 1/2 x 264	89x6706	500	2882	1300
16143Y1360	3 1/2 x 360	89x9144	500	3568	1622
16143Y1144	4 3/4 x 144	121x3688	750	2312	1051
16143Y1160	4 3/4 x 160	121x4064	750	3178	1445
16143Y1180	4 3/4 x 180	121x4572	750	3900	1769
16143Y1216	4 3/4 x 216	121x5486	750	5200	2364
16143Y1240	4 3/4 x 240	121x6096	750	3892	1940
16143Y1264	4 3/4 x 264	121x6706	750	4268	1940
For Varco Type 1000 Ton Elevator/Spider Only:					
70101Y1200	5 1/2 x 200	140x5080	1000	5100	2315

Varco® / BJ Manual Tong



**BJ Tong
HT35**



**Varco®
HT100**



**BJ Tong
HT55 / HT65**

MANUAL TONG SELECTION CHART

Description	Range Inches	Torque Capacity Ft Lbs
HT200	6-16	200000
HT135	7 1/2-12	135000
HT10	4-17	100000
HT65	3 1/2-17	65000
HT55	3 1/2-13 3/8	55000
HT35	2 3/8-10 3/4	35000

Varco® / BJ Manual Tongs

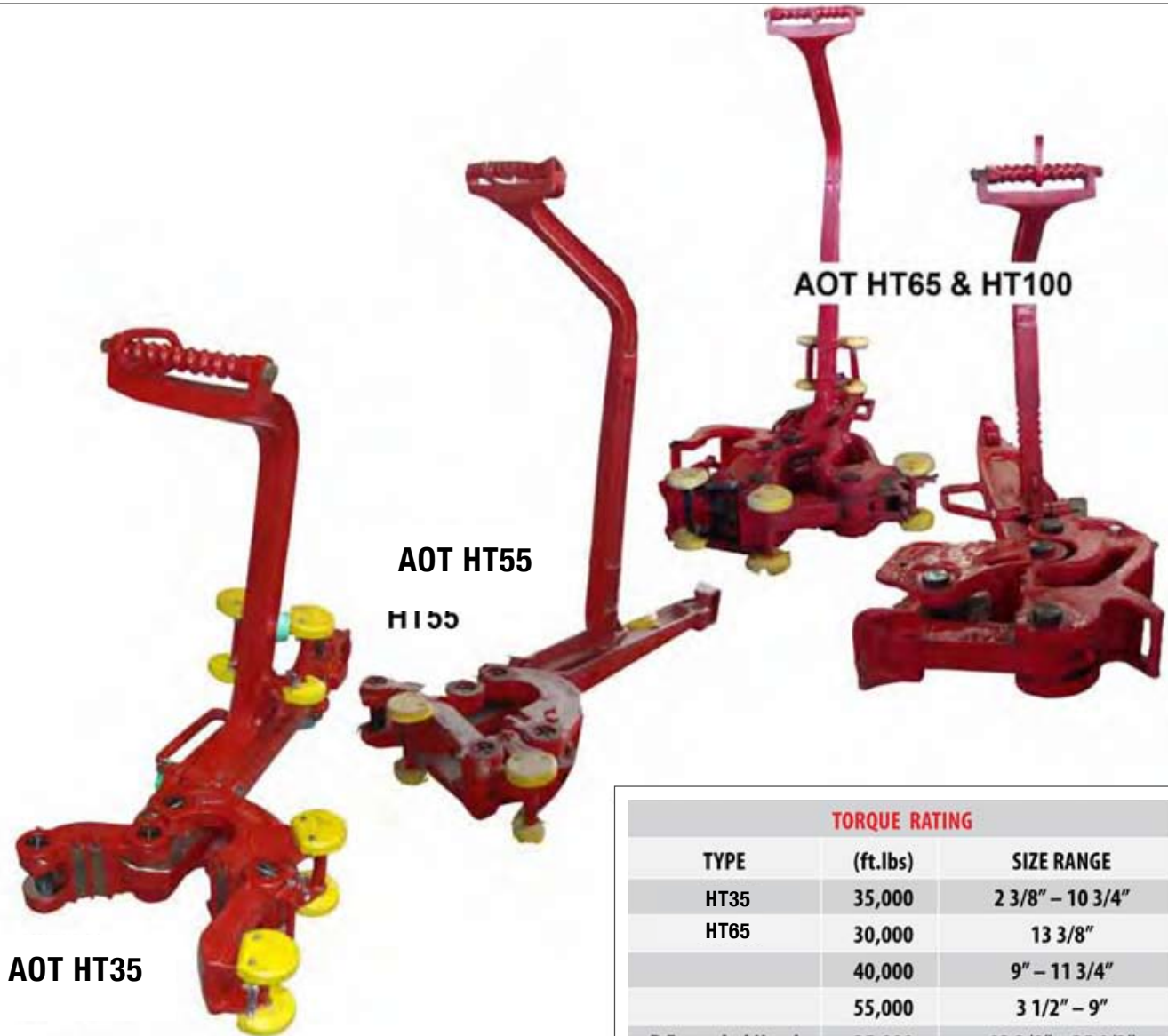
TONG ASSEMBLIES			
Description	Torque Ft Lbs	Wgt Lbs	P/N
HT35			
Complete with long lever, less lug jaws	32000	242	200620-2
Complete with short lever less lug jaws	32000	238	200620-3
Lug jaw assy. 2 3/8"-3.668"	15000	25	200076-1
Lug jaw assy. 2 7/8"-4 1/4"	15000	29	200077-1
Lug jaw assy. 3 1/2"-5 1/4"	25000	33	200078-1
Lug jaw assy. 5 1/4"-7"	32000	45	200079-1
Hinge & lug jaw assembly 7"-8 5/8"	32000	33	200080-2
Hinge & lug jaw assembly 9 5/8"-10 3/4"	32000	76	200081-2
HT55			
Complete with long lever, less lug jaws	55000	400	200560
Complete with short lever less lug jaws	55000	386	200560-1
Lug jaw assy. 3 1/2"-5"	55000	29	200083-1
Lug jaw assy. 5"-6 3/4"	55000	39	200084-1
Lug jaw assy. 6 5/8"-9"	55000	56	200085-1
Lug jaw assy. 9"-10 3/4"	40000	60	200086-1
Lug jaw assy. 11 3/4"	40000	61	200087-1
Lug jaw assy. 12 3/4"-13"	30000	72	200089-1
Lug jaw assy. 13 3/8"	30000	72	200090-1
HT65			
Complete less lug jaws	65000	440	200540
Lug jaw assy. 3 1/2"-8 1/4"	65000	82	200546-1
Lug jaw assy. 8"-11 1/4"	65000	97	200547-1
Lug jaw assy. 11 1/4"-14 3/8"	40000	71	200548
Lug jaw assy. 16"-17"	40000	83	200549
Hinge jaw assembly 8 1/2"-17"	65000	56	200545-1
HT100			
Complete less lug jaws	100000	533	200071
Lug jaw assy. 4"-8 1/2"	100000	135	200663-1
Lug jaw 8 1/2"-12"	100000	102	2500664
Lug jaw 12"-15"	75000	140	200665
Lug jaw 15 3/4"	100000	162	200666
Lug jaw 16"-17"	60000	135	200667
Hinge jaw assembly 8 1/2"-17"	100000	112	200662-1

Varco® / BJ Manual Tongs

HT50	Torque Ft Lbs	Wgt Lbs	P/N
Casing head asbly. 13-3/8"-14-1/2"	25000	340	200580-1
Casing head asbly. 14-1/2"- 16"	25000	352	200580-2
Casing head asbly. 16"- 17-1/2"	25000	373	200580-3
Casing head asbly. 17-1/2"- 19"	25000	385	200580-4
Casing head asbly. 19"- 20"	25000	397	200580-5
Casing head asbly. 20"- 21`-1/2"	25000	418	200580-6
Casing head asbly. 21-1/2" - 23"	25000	430	200580-7
Casing head asbly. 24" - 25-1/2"	25000	459	200580-8
Casing head asbly. 25-1/2" - 27"	25000	490	200600-1
Casing head asbly. 27" - -28-1/2"	25000	499	200600-2
Casing head asbly. 28-1/2" - 30"	25000	531	200600-3
Casing head asbly. 30" - 31-5/8"	25000	542	200600-4
Casing head asbly. 31-1/2" - 33"	25000	572	200600-5
Casing head asbly. 33" - 34-1/2"	25000	612	200600-6
Casing head asbly. 34-1/2" - 36"	25000	618	200600-7
HT135			
Complete less lug jaws	135000	659	200520
Lug jaw 7 1/2"-9 1/2"	135000	142	200525
Lug jaw 9 1/2"-11"	135000	168	200526
Lug jaw 10 3/4"-12"	135000	182	200527
HT200			
Complete less lug jaws	200000	1050	200500
Lug jaw 6"-7 7/8"	200000	80	200506-SP
Lug jaw asbly. 8"-9 5/8" or 11 1/2"-13 1/4"	200000	89	200506-1
Lug jaw asbly. 9 1/2"-11 1/8" or 13"-14 3/4"	200000	104	200507-1
Lug jaw asbly. 11"-12 1/2" or 14 3/8"-16"	200000	150	200508-1
Hinge jaw asbly. 11 1/2"-16"	200000	60	200505-1
HT501			
Casing head assbly. 13 3/8"-14 1/2"	50000	340	200580-1
Casing head assbly. 14 1/2"-16"	50000	352	200580-2
Casing head asbly. 16"-17 1/2"	50000	373	200580-3
Casing head asbly. 17 1/2"-19"	50000	385	200580-4
Casing head asbly. 19"-20"	50000	397	200580-5
Casing head asbly. 20"-21 1/2"	50000	418	200580-6
Casing head asbly. 21 1/2"-23"	50000	430	200580-7
Casing head asbly. 24"-25 1/2"	50000	459	200580-8
Casing head asbly. 25 1/2"-27"	50000	490	200600-1
Casing head asbly. 27"-28 1/2"	50000	499	200600-2

AOT Manual Tongs

Casing head assy. 25 1/2"-27"	50000	490	200600-1
Casing head assy. 27"-28 1/2"	50000	499	200600-2
Casing head assy. 28 1/2"-30"	50000	531	200600-3
Casing head assy. 30"-31 5/8"	50000	542	200600-4
Casing head assy. 31 1/2"-33"	50000	572	200600-5
Casing head assy. 33"-34 1/2"	50000	612	200600-6
Casing head assy. 34 1/2"-36"	50000	618	200600-7



TORQUE RATING		
TYPE	(ft.lbs)	SIZE RANGE
HT35	35,000	2 3/8" – 10 3/4"
HT65	30,000	13 3/8"
	40,000	9" – 11 3/4"
	55,000	3 1/2" – 9"
B Extended Head	25,000	13 3/8" – 25 1/2"
HT-65	40,000	11 3/4" – 17"
	65,000	3 1/2" – 11 1/4"
HT-100	60,000	16" – 17"
	75,000	12" – 15"
	100,000	4" – 12" and 15 3/4"

AOT Manual Tongs

HT35 TONG COMPLETE - HINGE & LUG JAW ASSEMBLIES - REPLACEMENT PARTS

HINGE AND LUG JAW ASSEMBLIES FOR HT35 TONG

AOT #	DESCRIPTION		WT.	
T30117-2	HT35 TONG COMPLETE W/STANDARD LEVER LESS LUG JAWS (2 3/8" – 7")		250	
T30117-3	HT35 TONG COMPLETE W/SHORT LEVER LESS LUG JAWS (2 3/8" – 7")		232	
T30117	HT35 TONG COMPLETE W/STANDARD LEVER LESS LUG JAWS (7 5/8" – 10 3/4")		250	
T30117-1	HT35 TONG COMPLETE W/SHORT LEVER LESS LUG JAWS (7 5/8" – 10 3/4")		232	
AOT #	ITEM #	DESCRIPTION	TORQUE RATING	WT.
T30728-1	34	2 3/8 — 3.668 LUG JAW ASSEMBLY	35,000 FT. LBS.	33
T30727-1	34	2 7/8 — 4 1/4 LUG JAW ASSEMBLY	35,000 FT. LBS.	34
T11939-4	34	3 1/2 — 5 1/4 LUG JAW ASSEMBLY	35,000 FT. LBS.	37
T11940-2	34	5 1/4 — 7 LUG JAW ASSEMBLY	35,000 FT. LBS.	49
T11941-1	N/P	7" - 8-5/8" HINGE & LUG JAW ASSEMBLY	35,000 FT. LBS.	61
T11941-2	N/P	7 — 8 5/8 LUG JAW	35,000 FT. LBS.	30
T11942-1	N/P	7 — 8 5/8 HINGE JAW ASSEMBLY (ONLY)	35,000 FT. LBS.	28
T13799-1	N/P	9 5/8 — 10 3/4 HINGE & LUG JAW ASSEMBLY	35,000 FT. LBS.	76
T13799	N/P	9 5/8 — 10 3/4 LUG JAW	35,000 FT. LBS.	39
T13798-1	N/P	9 5/8 — 10 3/4 HINGE JAW ASSEMBLY (ONLY)	35,000 FT. LBS.	36

NOTE: ADD-SH TO END OF LUG JAW P/N FOR JAWS W/SAFETY HANDLES

***Lug Jaw Assemblies include Jaw, and any required Tong Dies, Die Retainer Pins, Cotter Pins, & Grease Fittings**

REPLACEMENT PARTS FOR HT35 TONG

AOT #	ITEM #	DESCRIPTION	** SPARES	#REQ	WT.
T11516-2	1-7	STANDARD LEVER ASSY. F/HT35 TONG		1	87.00
T11516	1	STANDARD LEVER ONLY F/HT35 TONG		1	78.00
T11883-1	1-7	SHORT LEVER ASSY. F/HT35 TONG		1	63.00

AOT Manual Tongs

T51402-10	14	COTTER PIN	1		.08
T12863	15	SUSPENSION RING	1		1.50
T939168-133	16	HANGER ADJUSTMENT SCREW	1		.75
T939248-8	17	HANGER JAM NUT	2		.25
T30329	18-20	HANGER BOLT ASSY.	1	1	1.50
T939097-516	18	HANGER BOLT	1		1.40
T940985-8	19	HANGER BOLT NUT	1		.25
T51402-10	20	COTTER PIN	1		.05
T11511-1	21-24.7	LONG JAW ASSY. F/HT35 TONG	1		64.00
T11511-1	21	LONG JAW F/HT35 TONG	1		63.00
T16401-2	22	1/2 X 1 1/4 X 5 TONG DIE	144	AS REQD	.55
T17194	23	TONG DIE RETAINER PIN	24	AS REQD	.03
T51402-6	24	COTTER PIN	36	AS REQD	.01'
T11522	25	HINGE PIN NUT	4	4	0.35
T51506-8	33	GROOVE PIN F/HINGE PIN NUT	8	8	.05
T11521-1	26	THREADED HINGE PIN	4	4	2.65
T11513-5	27. 22-24	SHORT JAW ASSY. (2 3/8 — 7)	1		31.75
T11513-1	27. 22-24	SHORT JAW ASSY. (7 5/8 — 10 3/4)	1		31.75
T11933-1	28.25. & 33	LATCH ASSY.	1	1	17.25
T9561	29	LATCH SPRING	12	2	.10

HT55 TONG COMPLETE - HINGE & LUG JAW ASSEMBLIES - REPLACEMENT PARTS LUG JAW ASSEMBLIES FOR HT55 TONG

AOT#	DESCRIPTION		WT.	
T30114	HT55 TONG COMPLETE W/STANDARD LEVER LESS LUG JAWS		395.00	
T30114-1	HT55 TONG COMPLETE W/SHORT LEVER LESS LUG JAWS		386.00	
AOT #	ITEM #	DESCRIPTION	TORQUE RATING	WT
T11764-1	41	3 1/2 - 5 LUG JAW ASSEMBLY	55,000 ft. lbs.	30.00
T11196-3	41	4 1/4 - 6 3/4 LUG JAW ASSEMBLY	55,000 ft. lbs.	42.00
T11196-2	41	6 5/8 - 9 LUG JAW ASSEMBLY	55,000 ft. lbs.	53.00
T11297-1	41	9 - 10 3/4 LUG JAW ASSEMBLY	40,000 ft. lbs.	60.00
T13285-1	41	11 3/4 LUG JAW ASSEMBLY	40,000 ft. lbs.	61.00
T24592-3	41	12 3/4 - 13 LUG JAW ASSEMBLY	30,000 ft. lbs.	65.00
T24592-1	41	13 3/8 LUG JAW ASSEMBLY	30,000 ft. lbs.	28.00

AOT Manual Tongs

AOT #	ITEM #	DESCRIPTION	**SPARES	# REQ	WT
T12434-2	1-4	STANDARD LEVER ASSY. F/HT55 TONG		1	133.00
T12434	1	STANDARD LEVER ONLY F/HT55 TONG		1	124.00
T9568-1	1-4	SHORT LEVER ASSY. F/HT55 TONG		1	124.00
T9568	1-4	SHORT LEVER ONLY F/HT55 TONG		1	113.00
T2005682	2	NAME PLATE	1		.10
T53301-4-3	3	NAME PLATE SCREWS		4	.05
T53201	4	GREASE FITTING		2	.05
T9574	5	TONG LINE PIN F/HT55 TONG	1	1	6.00
T25468	6	TONG LINE PIN RETAINER	2	1	1.00
T26782	7-14	HANGER ASSY. F/HT55 TONG		1	56.00
T26783	7	HANGER ONLY F/HT55 TONG		1	47.00
T26782-SH	7-14	SET BACK HANGER ASSY. F/HT55 TONG		1	64.00
T26783-SH	7	SET BACK HANGER ONLY F/HT55 TONG		1	55.00
T12586	8	BALANCING SCREW		1	2.75
T939099-596	9	BALANCING SCREW BOLT		1	2.10
T929484-8	10	BALANCING SCREW BOLT NUT		1	.40
T51402-14	11	COTTER PIN		1	.08
T12863	12	SUSPENSION RING		1	1.50
T929168-133	13	HANGER ADJUSTMENT SCREW		1	.75
T939248-8	14	HANGER JAM NUT		2	.25
T939097-556	15	HANGER BOLT	1	1	1.40
T940985-8	16	HANGER BOLT NUT	1	1	.25
T51402-16	17	COTTER PIN	1	1	.05
T11194-1	18-30	LONG JAW ASSY. F/HT55 TONG		1	98.00
T11194	18	LONG JAW F/HT55 TONG		1	95.00
T11139	19	ADJUSTABLE STOP		1	.75
T11144	20	ADJUSTABLE STOP PLUNGER		1	.15
T11192	21	ADJUSTABLE STOP SPRING		1	.15
T11191	22	ADJUSTABLE STOP BOLT		1	.55
T8150	23	ADJUSTABLE STOP BOLT NUT		1	.20
T51402-14	24	COTTER PIN		AS REQD	.03
T11228	25	BOOSTER PLUNGER		1	.25
T11229	26	BOOSTER PLUNGER SPRING		1	.25
T940968-6	27	BOOSTER PLUNGER RETAINER PLUG		1	.25
T16402-2	28	1/2 X 1 1/4 X 5 7/8 TONG DIE	144	AS REQD	.75
T17194	29	TONG DIE RETAINER PIN	32	AS REQD	.03
T51402-6	30	COTTER PIN	32	AS REQD	01
T11142	31	HINGE PIN NUT	5	5	.35

AOT Manual Tongs

T51402-6	39	COTTER PIN	5	5	.01
T11140	NP	REMOVABLE HINGE PIN		NA	4.20
T20000-SH-2	42	SAFETY HANDLE KIT (fits all AOT tongs)	3	3	3.25

NOTE: ADD -SH TO END OF LATCH JAW ASSEMBLY, LATCH OR LATCH LUG JAWS FOR SAFETY HANDLES

AOT#	DESCRIPTION			WT.	
T200540	TYPE HT-65 TONG COMPLETE LESS LUG JAWS			440.00	
AOT #	ITEM #	DESCRIPTION	TORQUE RATING	WT	
T200546-1	34	3 1/2 - 8 1/4 LUG JAW ASSEMBLY	65,000 ft lbs	82.00	
T200547-1	34	8 - 11 1/4 LUG JAW ASSEMBLY	65,000 ft lbs	97.00	
T200548	34	11 3/4 - 14 3/8 LUG JAW ASSEMBLY	40,000 ft lbs	71.00	
T200549	34	16 - 17 LUG JAW ASSEMBLY	40,000 ft lbs	83.00	
T200545-1	NP	11 3/4 - 17 HINGE JAW ASSEMBLY	40,000 ft lbs	56.00	

NOTE: ADD-SH TO END OF LUG JAW P/N FOR JAWS W/SAFETY HANDLES

*Lug & Hinge Jaw Assemblies include Jaw, and any required Tong Dies, Die Retainer Pins, Cotter Pins & Grease Fittings

**Hinge Jaw Assembly required for sizes greater than 11 1/4

REPLACEMENT PARTS FOR TYPE "HT-65" TONG

AOT #	ITEM #	DESCRIPTION	**SPARES	# REQ	WT
T200541-1	1-8	LEVER ASSY. F/TYPE HT-65 TONG		1	139.00
T200541	1	STANDARD LEVER ONLY F/TYPE HT-65 TONG		1	134.00
T200551	2	NAME PLATE		1	.10
T5331-4-3	3	NAME PLATE SCREWS		4	.05
T53201	4	GREASE FITTING		2	.05
T24529	5	TONG LINE RETAINER	1	1	3.65
T24249	6	TONG LINE RETAINER BOLT	1	1	1.08
T50809-N-C	7	WASHER F/RETAINER BOLT	1	1	.05
T51402-8	8	COTTER PIN	1	1	.04
T200668-2	9-16	HANGER ASSY. F/TYPE HT-65 TONG		1	56.00
T200668	9	HANGER ONLY F/TYPE HT-65 TONG		1	47.00
T200668-2-SH	9-16	SET BACK HANGER ASSY. F/TYPE HT-65 TONG		1	64.00
T20068-SH	9	HANGER ONLY F/TYPE HT-65 TONG		1	55.00
T12586	10	BALANCING SCREW		1	2.75
T939099-596	11	BALANCING SCREW BOLT		1	2.10
T50512-C	12	BALANCING SCREW BOLT NUT		1	.40
T51402-16	13	COTTER PIN		1	.08
T12863	14	SUSPENSION RING		1	1.50
T939168-133	15	HANGER ADJUSTMENT SCREW		1	.75
T50314-C	16	HANGER JAM NUT		2	.25
T939099-556	17	HANGER BOLT	1	1	1.40

AOT Manual Tongs

T50012-52-C8	24	BOLT	1	.75
T50212-C	25	NUT	1	.35
T50912-C	26	LOCKWASHER	1	.04
T200544-1	27-29, 4	LATCH ASSY.	1	36.00
T200544	27	LATCH	1	34.00
T24526	28	LATCH SPING PLUNGER	1	1.75
T24530	29	PLUNGER PIN	1	.25
T24525	30	LATCH SPRING	12	1 .50
T200550	31	HINGE PIN	4.5	4.5 5.00
T24528	32	HINGE PIN NUT	4.5	4.5 .75
T51405-20	33	COTTER PIN	4.5	4.5 .03
T2000-SH-2	35	SAFETY HANDLE KIT (fits all AOT tongs)	4	4 3.25

AOT TYPE "HT-100" TONG COMPLETE

AOT#	DESCRIPTION	WT.
T200071	TYPE HT-100 TONG COMPLETE LESS LUG JAWS	533.00

HINGE & LUG JAW ASSEMBLIES FOR TYPE "HT-100" TONG

AOT #	ITEM #	DESCRIPTION	TORQUE RATING	WT
T200663-1	35	4 - 8 1/2 LUG JAW ASSEMBLY	100,000 ft lbs	135.00
T200664	35	8 1/2 — 12 LUG JAW ASSEMBLY	100,000 ft lbs	102.00
T200665	35	12 — 15 LUG JAW ASSEMBLY	75,000 ft lbs	140.00
T200666	35	15 3/4 LUG JAW ASSEMBLY	100,000 ft lbs	162.00
T200667	35	16 — 17 LUG JAW ASSEMBLY	60,000 ft lbs	140.00
T200662-1	NP	8 1/2 — 17 HINGE JAW ASSEMBLY	100,000 ft lbs	112.00

NOTE: ADD-SH TO END OF LUG JAW P/N FOR JAWS W/SAFETY HANDLES

***Lug & Hinge Jaw Assemblies include Jaw, and any required Tong Dies, Die Retainer Pins, Cotter Pins & Grease Fittings**

****Hinge Jaw Assembly required for sizes greater than 8 1/2"**

REPLACEMENT PARTS FOR TYPE "HT-100" TONG

AOT #	ITEM #	DESCRIPTION	**SPARES	# REQ	WT
T200661-1	1-8	LEVER ASSY. F/TYPE HT-100 TONG		1	191.00
T200661	1	STANDARD LEVER ONLY F/TYPE HT-100 TONG		1	186.00
T200669	2	NAME PLATE		1	,.10
T53301-4-3	3.	NAME PLATE SCREWS		4	,.05
T53201	4	GREASE FITTING		2	,.05
T24529	5	TONG LINE RETAINER	1	1	3.65

Bushings



**TI Mfg. Kelly Bushings
HDS & HDP**

**TI Mfg. MSPC Master
Bushings
20-1/2" thru 27-1/2"**



**TI Mfg. Drill Bowls
#1, #2, #3**

Spinning Pipe Wrenches - SSW

**Varco® SSW40
Spinning Pipe Wrench**



**Varco® SSW30
Spinning Pipe Wrench**



**Varco® SSW10
Spinning Pipe Wrench**



TI Mfg. Safety Clamps - 4 Types



Safety Clamps "Type T"



MP Style Safety Clamps



Safety Clamps "Type C"



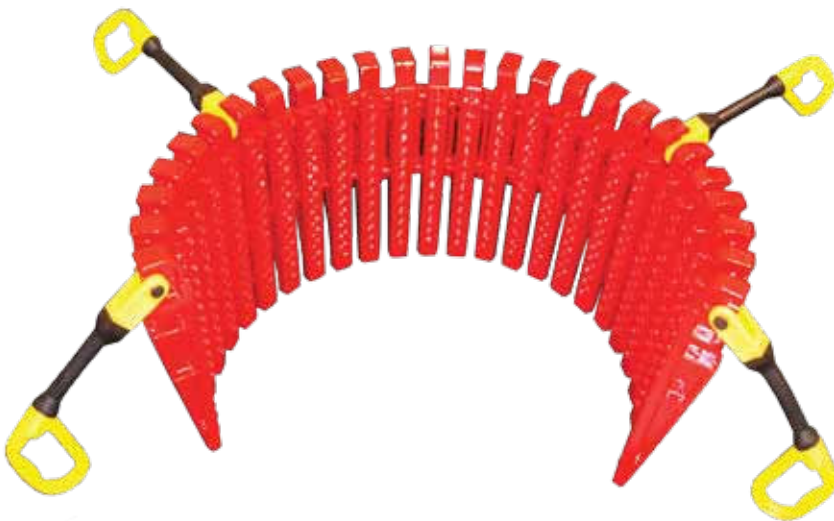
**Air-Over-Hydraulic
Safety Clamps**

Drill Collar Slips, Rotary Slips



**TI Mfg. Drill Collar Slips
DCS-S, DCS-R, DCS-L**

Flex Slip Handles



**TI Mfg. CMS-XL
6 5/8" - 36"**

Rotary Slips, DU Slips



**TI Mfg. Rotary Slip
SDS, SDML, SDXL**

**TI Mfg. & AOT Mfg.
DU Long w/Flex Handles**



**TI Mfg. UC3 Casing Slip
7" - 36"**



**TI Mfg. & AOT Mfg.
DU Short w/Steel Handles**

Woolley Slips: TI interchangeable with Woolley Type

TI Mfg interchangeable

Woolley Type-C Casing Slips

The same features of the Woolley Type-A slips may be found in these casing slips: lightweight truss-type construction; self-centering, full-circle grip to prevent damage to thin-wall tubulars; removable inserts with a generous 30 (degree) bevel to minimize any danger of loss in the hole.

Slips are tapered to fit A.P.I. master bushings. Varying insert sizes plus the simple addition or removal of body segments make it easy to provide a fit for any pipe size from 7" through 20" O.D. casing.

Available in six sizes. Type-C casing slips require reducing-size inserts to fit the various casing OD's within each of the first three size ranges below:

- 7" to 8-5/8" O.D. Casing
- 9-5/8" to 10-3/4" O.D. Casing
- 11-3/4" to 13-3/8" O.D. Casing
- 16" O.D. Casing
- 18-5/8" O.D. Casing



TI Mfg. Woolley
Casing Slips

Woolley Slips: TI interchangeable with Woolley Type

TI Mfg interchangeable Woolley Type-B Long for depths to 15,000 ft.



In the range of 8,000 to 15,000 foot depths, this slip provides a 16" gripping length (24 inserts) and all the clamping strength you'll need. Two body sizes are available: 4-1/2" bodies for pipe sizes from 2-3/8" through 4-1/2" ... or 5-1/2" bodies for 3-1/2" through 5-1/2" pipe.

TI Mfg interchangeable Woolley Type-B Short for depths to 8,000 ft.



With all the quality features of its deeper-rated counterparts, with Type-B Short comes in 5-1/2" body size only. The 12" gripping length (18 inserts) holds strings to 8,000 feet.

Interchangeable parts - Type-B slips, both short and long models, use the same handle pins, insert-retainer pins, and hinge pins. Handles, too, are interchangeable between short and long models, but cannot be exchanged between left, center, and right body segments.

Overshot

The Series 150 Releasing Overshot is an external catch fishing tool. The Overshot is used to retrieve broken pipe from the well bore. It is rugged & easy to use. Overshots come with a wide range of available accessories.



Fishing Magnets

The Fishing Magnet is used for retrieving debris which cannot be caught with the overshot or spear fishing methods. Ferrous steel items are easily picked up and removed from the well.

Fishing Jar

Fishing Jar picture not shown

Hydraulic Fishing Jar is an easy to use accessory tool that assists in various operations such as fishing, testing, coring, reaming & washover. Designed to be installed in the string above the fishing tool assembly, it allows the operator to deliver an upward blow to the equipment installed in the string below the jar. This is helpful when the string is stuck or restricted & cannot be lifted.



Spiral Grapple

The Spiral Grapple is a left-hand helix that conforms to the inside of the overshot bowl. Spiral Grapples make it possible for the overshot to engage & catch larger size fish than a basket grapple can in the same overshot.

Basket Grapple

The basket grapple is a slotted cylinder with an external helix that fits into the overshot bowl with hardened wicker threads that grip the fish. Three types of basket grapples are available. The Standard Basket Grapple, The Long Catch Basket Grapple and the Short Catch Basket Grapple.



Cross-Over Subs

Cross-Over Subs picture not shown

Cross-Over Subs provide a connection between joints of different size or type of drilling, washover, or tubing strings. Subs may be used in applications when it is necessary to have frequent disconnection points.

Taper Tap

Taper Tap picture not shown

The Taper Tap is made from high grade alloy & especially heat treated. The basic Taper Tap is a single piece construction. The Taper Tap is connected to the bottom of the fishing string & ran into the hole until reaching the fish. The Taper Tap can be rotated into the fish until full engagement to remove the fish from the hole.

Type A Packer & Mill Control Packer

A Pack-Off system is necessary if circulation is required during the fishing operation. Packing off ensures circulation through, rather than around the fish. The pack off system required will depend on the type of grapple being used. If the overshot is equipped with a spiral grapple, a Type A Packer is used to seal between the overshot bowl & the fish. If a basket grapple is used, pack off is achieved by the inner seal on the Mill Control Packer.



Mill Control Packer



Type A Packer

Jar Intensifier

Jar Intensifier picture not shown

A Jar Intensifier is another accessory tool designed to be run with the Fishing Jar. It will accelerate the upward motion of the drill collars & the fishing jar allowing the operator to apply a harder impact to the fish. This is helpful in deviated holes where there is insufficient string length to adequately stretch the running string, acting also as a shock absorber to the rebounding string.

Fishing Bumper Sub

Fishing Bumper Sub picture not shown

The Fishing Bumper Sub is designed to withstand repeated bumping operations in most any standard fishing applications. Once in the hole the operator can deliver successive upward or downward blows with no presetting.



Ditch Magnet

This tool is used during milling and washover operations. It is positioned in the mud return before the shale shaker to remove metal particles, protecting the mud pumps and other costly equipment of the mud system.



Releasing Spear

A Releasing Spear is designed to be able to go down hole and internally engage pipe and remove it from the well. You can also disengage the pipe if needed and come out of the well.

**Texas International Stocks Fishing Tools:
Z-Jar, Intensifiers, Fishing Bumper Subs, Fishing Magnets, Overshot, Spiral Grapple,
Crossover-Sub, Mill Control Packer, Taper Tap, Basket Grapple, Type A Packer.**

Call for details and hard to find spare parts.

Casing Scraper

A Casing Scraper is made to remove Scale, Mud, Cement, Rust Scales, Paraffin, Bullets and other material from inside the Casing Wall.

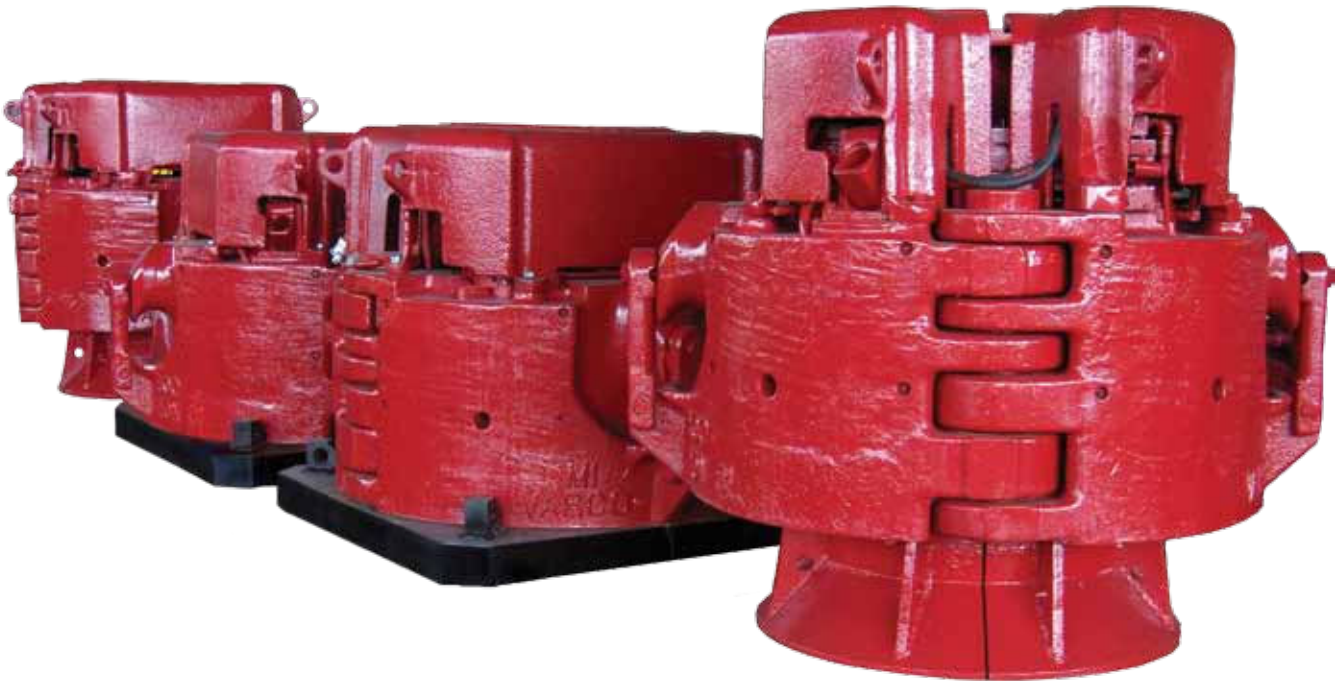


Reverse Circulating Junk Basket

By Reverse Circulating with this tool in the hole you can remove all type of junk from the bottom of the well. It is used to remove hand tools, bit cones, slips and other small pieces of junk from the bottom of the well.

Large Casing Tools For Long Term Rental

We offer competitive pricing on quality equipment for long-term rentals. Please contact our sales team for a quote.



250 Ton Elevator Spider

Varco® / BJ 2-3/8" to 7-5/8"

TI Mfg. 2-3/8" to 7-5/8"

BJ 350 TON Elevator Spider 4-1/2" to 13-3/8"

Varco® 500 Ton Elevator Spider w/inserts

24" to 16"

16 to 24-1/2"

Varco® 750 Ton Elevator Spider - 6-5/8" to 14"

TI Mfg. Casing Elevators 150 Ton - 350 Ton

Texas International Oilfield Tools, LTD. Manufacturing



- Logistical Manufacturing in our new 73,000 sq. ft. facility
- Repair & Re-certification
- Product Load Testing
- Magnetic Particle Inspection (MPI)
- Custom designed products built to fit your needs
- Extensive In-House Inventory



Texas International Quality Policy

It is the policy of Texas International Oilfield Tools, LTD. to meet and/or exceed our customer requirements by on-time delivery of the highest quality of oilfield equipment, in strict compliance with safety and regulatory requirements, while providing maximum value and superior customer service during and after the sale of products.





Index by Page

Company Information	3
TI Mfg. Pipe Handling Tools List	4
Power Equipment	
Skid Mounted Power Unit Comparison	5
Skid Mounted Power Unit Hydraulic	6
Skid Mounted Power Unit Hydraulic - Air-start Exploded View	7
Skid Mounted Power Unit Hydraulic - Air-start Exploded Aerial View	8
Skid Mounted Power Unit Hydraulic - Air-start Exploded Engine View	9
Skid Mounted Power Unit Electrohydraulic	10
Skid Mounted Power Unit Electrohydraulic Exploded Forward View	11
Skid Mounted Power Unit Electrohydraulic Exploded Aerial View	12
Skid Mounted Power Unit Electrohydraulic Exploded View List	13
Skid Mounted Power Unit Zone II DPU44 & Specs	14
Hydraulic Cathead EZY Precision Torque Specs	15
Hydraulic Cathead EZY Precision Torque Assembly Exploded View	16
Hydraulic Cathead EZY Precision Torque Assembly BOM Exploded View	17
Hydraulic Cathead EZY Precision Torque Assembly BOM Exploded List	18
Hydraulic Cathead EZY Precision Torque Assembly Hose Routing	19
Hydraulic Cathead EZY Precision Torque Cylinder Assembly & Parts List	20
Hydraulic Cathead EZY Precision Torque Cylinder Assembly Exploded View & List	21
Hydraulic Cathead EZY Precision Torque Control Box Exploded View & List	22
Wireline Units - Surveyor & Retriever	23
Farr Power Tongs & Specs	
SL4500, KT5500	24
KT8625, LW9625	25
KT9625, KT10750	26
KT13627, KT14000	27
KT16000, KT20000	28
HD26000, HD31000	29
KT14000 High Torque, CM1312	30
CM14500, 14K 50K Top Loading Bucking Unit	31
Precision Die Technologies	32
WinCatt™ Torque Turn Management Software	33
Elevator / Spiders	
TI Mfg. 250 Ton Elevator / Spider	34
TI Mfg. 250 Ton Elevator / Spider Exploded View	35
TI Mfg. 250 Ton Elevator / Spider Slip Lock Mechanism Exploded View T28510 Revision A	36
TI Mfg. 250 Ton Elevator / Spider Slip Lock Mechanism Exploded View T28510 Overall Dims	37
TI Mfg. 250 Ton Elevator / Spider Slip Lock Mechanism Exploded View T200372-2 w/New Pork Chop	38
TI Mfg. 350 Ton Elevator / Spider	39
Varco® / BJ Elevator/ Spiders & Specs	
Varco® / BJ 250 Ton Elevator / Spider & Specs	40
Varco® / BJ 350 Ton Elevator / Spider Specs	41
Varco® / BJ 350 Ton Elevator / Spider & Specs	42
Varco® / BJ 350 Ton Elevator / Spider Specs & Varco® 500 Ton Elevator / Spider	43
Varco® 500 Ton Elevator / Spider Specs	44
Varco® 750 Ton Elevator / Spider & Specs	45
Varco® FMS, FMS 375 & Specs	46
Varco® / BJ Elevator Spider Extensive In-Stock Views	47
Casing Tools	
TI Mfg. Single Joint Elevator - 5 Ton, 2-3/8" to 30"	48
TI Mfg. API Bowl	48
TI Mfg. Pneumatic Tubing Spider Type C, CHD, E, F	48
TI Mfg. Hinged Spider w/Bushings 36" & 22"	49
TI Mfg. Casing Bushing CB, CUL, CU	49



Index by Page (cont.)

Slip Type Elevators	
TI Mfg. MYT 40 Ton	50
Varco® YT 75 Ton	50
Varco® HYT 150 Ton	50
Varco® YC 75 Ton	50
Varco® MYC 125 Ton	50
Varco® HYC 200 Ton	50
Center Latch Elevators - Collar Type & Specs	51
SLX Side Door Elevator - TI Mfg. & Varco® & Specs	52
SLX & SMX Side Door Elevator	53
Casing Tools Extensive In-Stock Views	54
Con-Tech Thread Protectors	55
Drilling Tools	
Drill Pipe Elevator MGG, GG, RG, HGG	56
Elevator Weldless Links Specs	57
Elevator Weldless Links & Specs	58
Manual Tongs & Specs	
BJ Tong HT35, HT55 / HT65 & Specs	59
Varco® HT100	59
Varco® / BJ Manual Tong Specs - HT35, HT55, HT65, HT100	60
Varco® / BJ Manual Tong Specs - HT50, HT135, HT200, HT501	61
AOT HT35, HT55, HT65, HT100 & Specs	62
AOT Specs HT35	63
AOT Specs HT35, HT55	64
AOT Specs HT55	65
AOT Specs HT65	66
AOT Specs HT65, HT100	67
Bushings	
Spinning Pipe Wrenches SSW40, SSW30, SSW10	69
TI Mfg. Safety Clamps	70
Rotary Tools	
Drill Collar Slips, Rotary Slips	71
Rotary Slips, DU Slips	72
Casing Slips, Woolley Slips	73
Fishing Tools	
Overshot, Fishing Magnets, Fishing Jar	74
Spiral Grapple, Basket Grapple, Cross-Over Subs, Taper Tap	75
Type A Packer, Mill Control Packer, Jar Intensifier, Fishing Bumper Sub	76
Releasing Spear, Ditch Magnet	77
Casing Scraper, Reverse Circulating Junk Basket	78
Rental Tools	79
TI Mfg. Manufacturing Highlights	80
TI Mfg. Manufacturing Views & Quality Policy	81
Rebuild & ReMan	82
New Facility	83

Index by Alphabetical

Bushings	
Casing Slips, Woolley Slips	73
Casing Tools Extensive In-Stock Views	54
Center Latch Elevators - Collar Type & Specs	51
Company Information	3
Con-Tech Thread Protectors	55
Drill Collar Slips, Rotary Slips	71
Drill Pipe Elevator MGG, GG, RG, HCC	56
Elevator Weldless Links Specs	57
Elevator Weldless Links & Specs	58
Farr Power Tongs	
SL4500, KT5500	24
KT8625, LW9625	25
KT9625, KT10750	26
KT13627, KT14000	27
KT16000, KT20000	28
HD26000, HD31000	29
KT14000 High Torque, CM1312	30
CM14500, 14K 50K Top Loading Bucking Unit	31
Fishing Tools	
Overshot, Fishing Magnets, Fishing Jar	74
Spiral Grapple, Basket Grapple, Cross-Over Subs, Taper Tap	75
Type A Packer, Mill Control Packer, Jar Intensifier, Fishing Bumper Sub	76
Releasing Spear, Ditch Magnet	77
Casing Scraper, Reverse Circulating Junk Basket	78
Hydraulic Cathead EZY Precision Torque Specs	15
Hydraulic Cathead EZY Precision Torque Assembly Exploded View	16
Hydraulic Cathead EZY Precision Torque Assembly BOM Exploded View	17
Hydraulic Cathead EZY Precision Torque Assembly BOM Exploded List	18
Hydraulic Cathead EZY Precision Torque Assembly Hose Routing	19
Hydraulic Cathead EZY Precision Torque Cylinder Assembly & Parts List	20
Hydraulic Cathead EZY Precision Torque Cylinder Assembly Exploded View & List	21
Hydraulic Cathead EZY Precision Torque Control Box Exploded View & List	22
Manual Tongs & Specs	
BJ Tong HT35, HT55 / HT65 & Specs	59
Varco® HT100	59
Varco® / BJ Manual Tong Specs - HT35, HT55, HT65, HT100	60
Varco® / BJ Manual Tong Specs - HT50, HT135, HT200, HT501	61
AOT HT35, HT55, HT65, HT100 & Specs	62
AOT Specs HT35	63
AOT Specs HT35, HT55	64
AOT Specs HT55	65
AOT Specs HT65	66
AOT Specs HT65, HT100	67
New Facility	
Inside Back Cover	
Precision Die Technologies	32
Rebuild & ReMan	82
Rental Tools	79
Rotary Slips, DU Slips	72
Skid Mounted Power Unit Comparison	5
Skid Mounted Power Unit Electrohydraulic	10
Skid Mounted Power Unit Electrohydraulic Exploded Forward View	11
Skid Mounted Power Unit Electrohydraulic Exploded Aerial View	12
Skid Mounted Power Unit Electrohydraulic Exploded View List	13
Skid Mounted Power Unit Hydraulic	6
Skid Mounted Power Unit Hydraulic - Air-start Exploded View	7
Skid Mounted Power Unit Hydraulic - Air-start Exploded Aerial View	8



Index by Alphabetical (cont.)

Skid Mounted Power Unit Hydraulic - Air-start Exploded Engine View	9
Skid Mounted Power Unit Zone II DPU44 & Specs	14
Slip Type Elevators	
TI Mfg. MYT 40 Ton	50
Varco® YT 75 Ton	50
Varco® HYT 150 Ton	50
Varco® YC 75 Ton	50
Varco® MYC 125 Ton	50
Varco® HYC 200 Ton	50
SLX & SMX Side Door Elevator	53
SLX Side Door Elevator - TI Mfg. & Varco® & Specs	52
Spinning Pipe Wrenches SSW40, SSW30, SSW10	69
TI Mfg. 250 Ton Elevator / Spider	34
TI Mfg. 250 Ton Elevator / Spider Exploded View	35
TI Mfg. 250 Ton Elevator / Spider Slip Lock Mechanism Exploded View T28510 Revision A	36
TI Mfg. 250 Ton Elevator / Spider Slip Lock Mechanism Exploded View T28510 Overall Dims	37
TI Mfg. 250 Ton Elevator / Spider Slip Lock Mechanism Exploded View T200372-2 w/New Pork Chop	38
TI Mfg. 350 Ton Elevator / Spider	39
TI Mfg. API Bowl	48
TI Mfg. Casing Bushing CB, CUL, CU	49
TI Mfg. Hinged Spider w/Bushings 36" & 22"	49
TI Mfg. Manufacturing Highlights	80
TI Mfg. Manufacturing Views & Quality Policy	81
TI Mfg. Pipe Handling Tools List	4
TI Mfg. Pneumatic Tubing Spider Type C, CHD, E, F	48
TI Mfg. Safety Clamps	70
TI Mfg. Single Joint Elevator - 5 Ton, 2-3/8" to 30"	48
Varco® / BJ Elevator/ Spiders & Specs	
Varco® / BJ 250 Ton Elevator / Spider & Specs	40
Varco® / BJ 350 Ton Elevator / Spider Specs	41
Varco® / BJ 350 Ton Elevator / Spider & Specs	42
Varco® / BJ 350 Ton Elevator / Spider Specs & Varco® 500 Ton Elevator / Spider	43
Varco® 500 Ton Elevator / Spider Specs	44
Varco® 750 Ton Elevator / Spider & Specs	45
Varco® FMS, FMS 375 & Specs	46
Varco® / BJ E/S Extensive In-Stock Views	47
WinCatt™ Torque Turn Management Software	33
Wireline Units - Surveyor & Retriever	23



The terms VARCO, VARCO-BJ, and BJ are trademarks of Varco I/P, Inc., National Oilwell Varco, L.P., or their affiliates. Texas International Oilfield Tools is not an authorized distributor of any Varco I/P or NATIONAL OILWELL VARCO product. Texas International Oilfield Tools is not affiliated with Varco I/P, Inc., National Oilwell Varco, L.P., or their affiliates. Varco I/P, Inc., National Oilwell Varco, L.P., and their affiliates do not endorse any Texas International Oilfield Tools' products or replacement parts.